

MC 1104

20/05/2014

Meso-zooplankton abundance:

2273 ind. m⁻³

Long-term average (May, 1984-2013):

1576 ± 839 ind. m⁻³

Most abundant taxa :

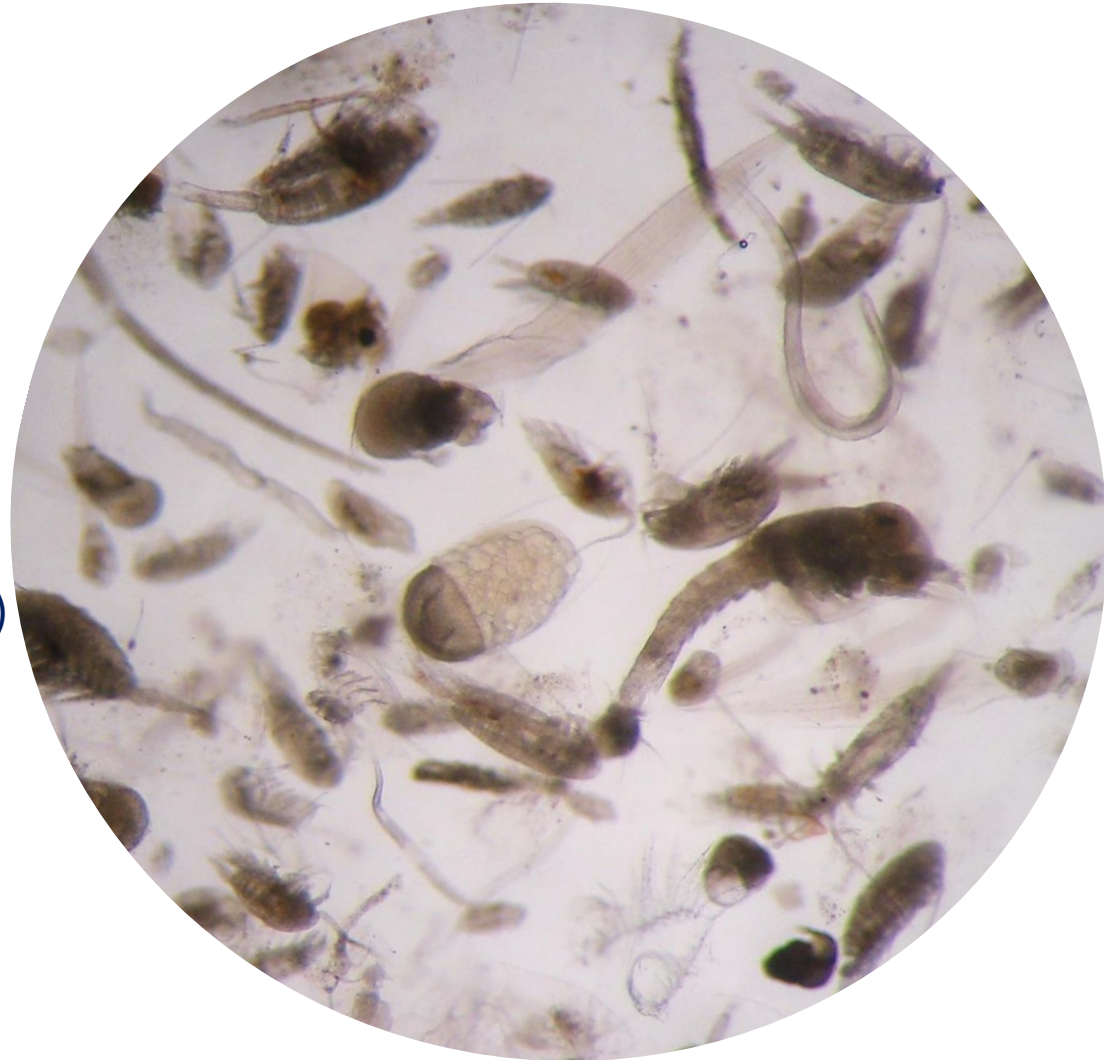
- appendicularian *Oikopleura* spp. (43%)
- copepod *Centropages typicus* (13%)
- copepod *Acartia clausi* (11%)

Dry mass: 7.8 mg m⁻³ (weight after 24h)

Long-term average (May, 1984-2013):

10.7 ± 3.8 mg m⁻³

Note: Sample collected with WP2 net



Live sample