

## MC 1158

22/06/2015

### Meso-zooplankton abundance:

10878 ind. m<sup>-3</sup>

### Long-term average (June, 1984-2014):

1965 ± 1175 ind. m<sup>-3</sup>

### Most abundant taxa :

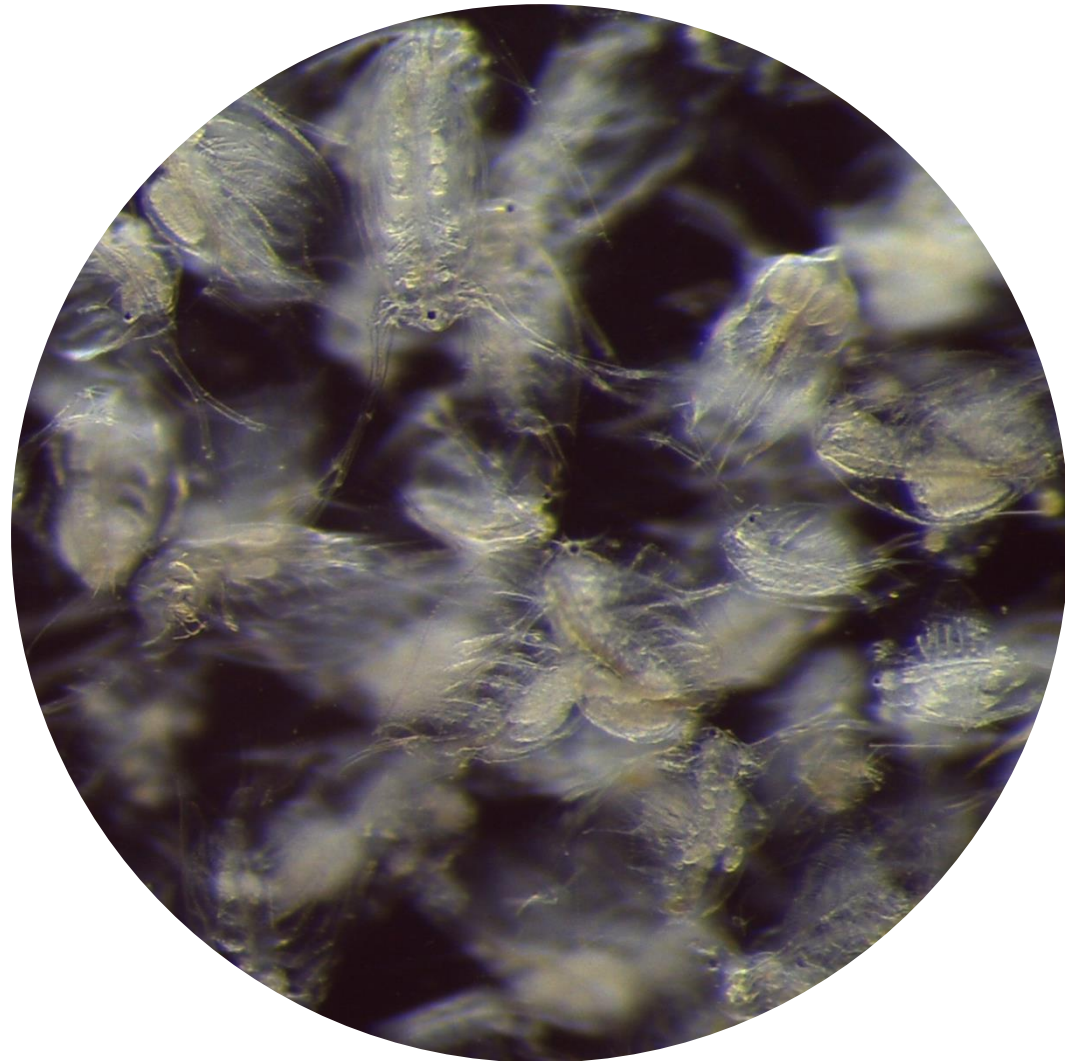
- copepod *Centropages typicus* (4%)
- cladoceran *Penilia avirostris* (82%)

**Dry mass:** 21 mg m<sup>-3</sup> (weight after 48h)

### Long-term average (June, 1984-2014):

10.2 ± 4 mg m<sup>-3</sup>

Note: One the most abundant sample of our time-series



Live sample