

**Meso-zooplankton abundance:**

3266 ind. m<sup>-3</sup>

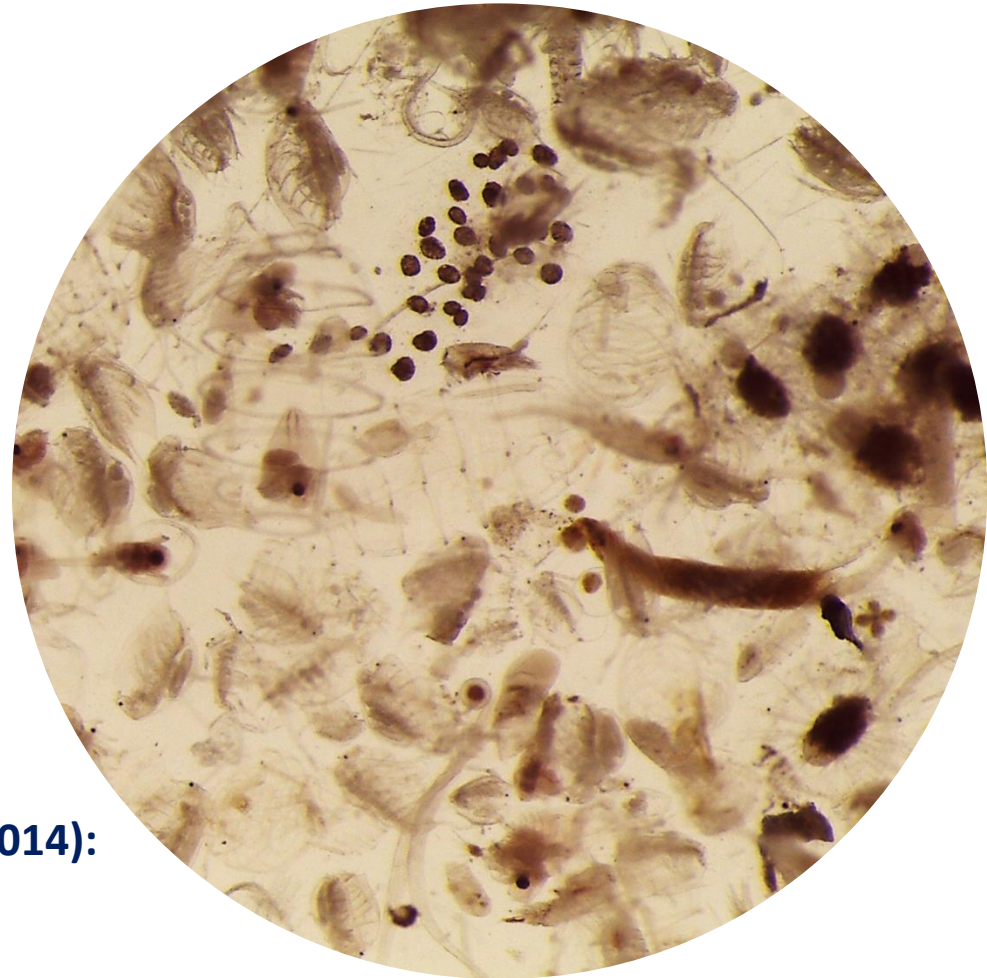
**Long-term average (September,  
1984-2014):** 2265 ± 1270 ind. m<sup>-3</sup>

**Most abundant taxa :**

- copepod *Paracalanus parvus* (10%)
- cladoceran *Penilia avirostris* (52%)

**Dry mass:** 6.6 mg m<sup>-3</sup>

**Long-term average (September, 1984-2014):**  
10.1 ± 4.8 mg m<sup>-3</sup>



*Live sample*