

Meso-zooplankton abundance:

1069 ind. m⁻³

**Long-term average (April,
1984-2015):** 1625 ± 790 ind.m⁻³

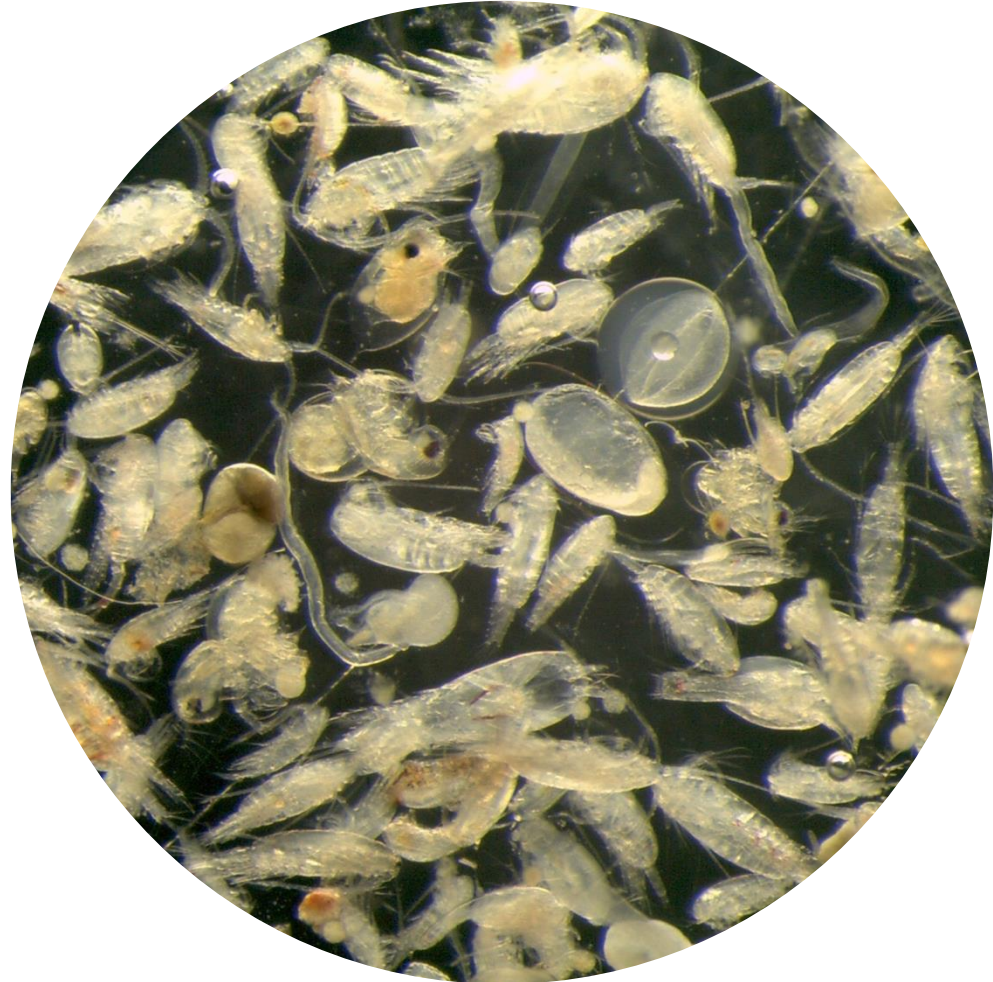
Most abundant taxa :

- copepod assemblage (78%)
- larvaceans (16%)
- cladocerans (3%)

Dry mass: 9.5 mg m⁻³

Long-term average (April, 1984-2015):
11 ± 5 mg m⁻³

Note: Sample collected with WP2 net



Live sample