

**Meso-zooplankton abundance:**

15454 ind. m<sup>-3</sup>

**Long-term average (June, 1984-2017):**

2112 ± 1099 ind.m<sup>-3</sup>

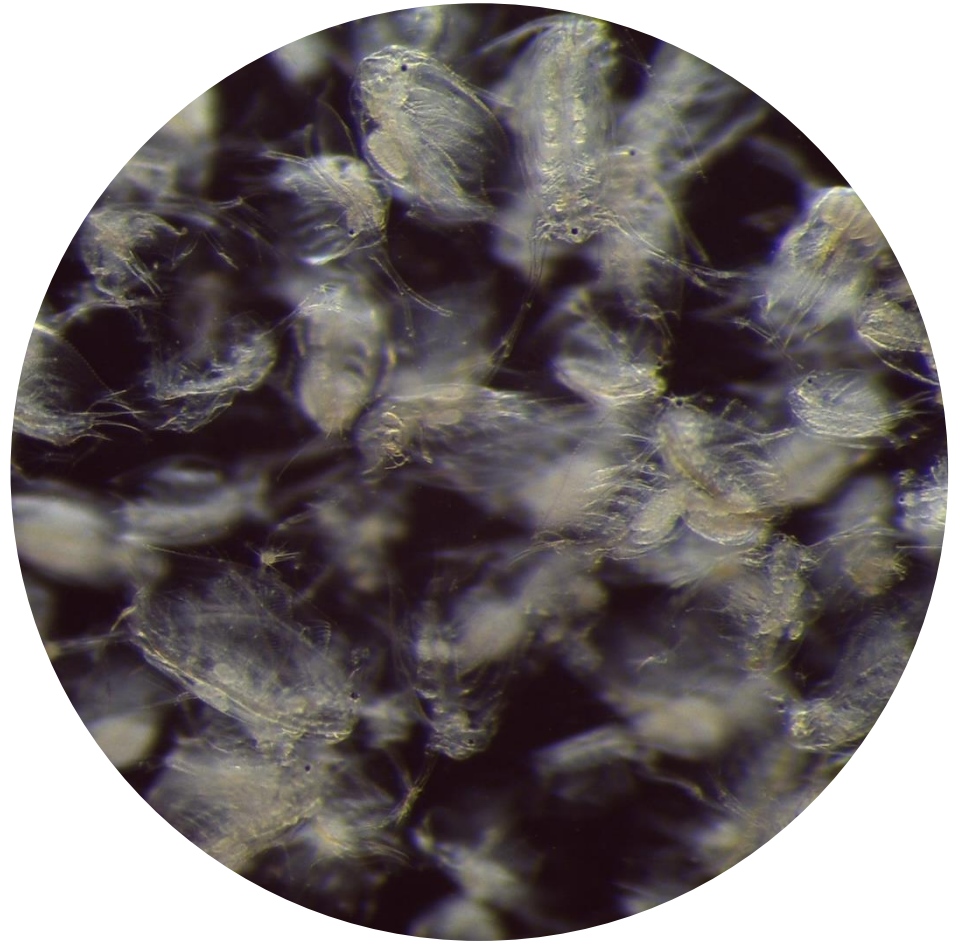
**Most abundant taxa :**

- *Penilia avirostris* (67%)
- Copepods (30%)

**Dry mass: 25.8 mg m<sup>-3</sup>**

**Long-term average (June, 1984-2018):**

10.2 ± 4.1 mg m<sup>-3</sup>



*Live sample*