

## MC 1102

07/05/2014

### Phytoplankton abundance:

$1.0 \times 10^4$  cells ml<sup>-1</sup>

### Phytoplankton groups percentage:

flagellates: 48.7%, diatoms: 40%,  
dinoflagellates: 2.3%, coccolithophores: 0.9%

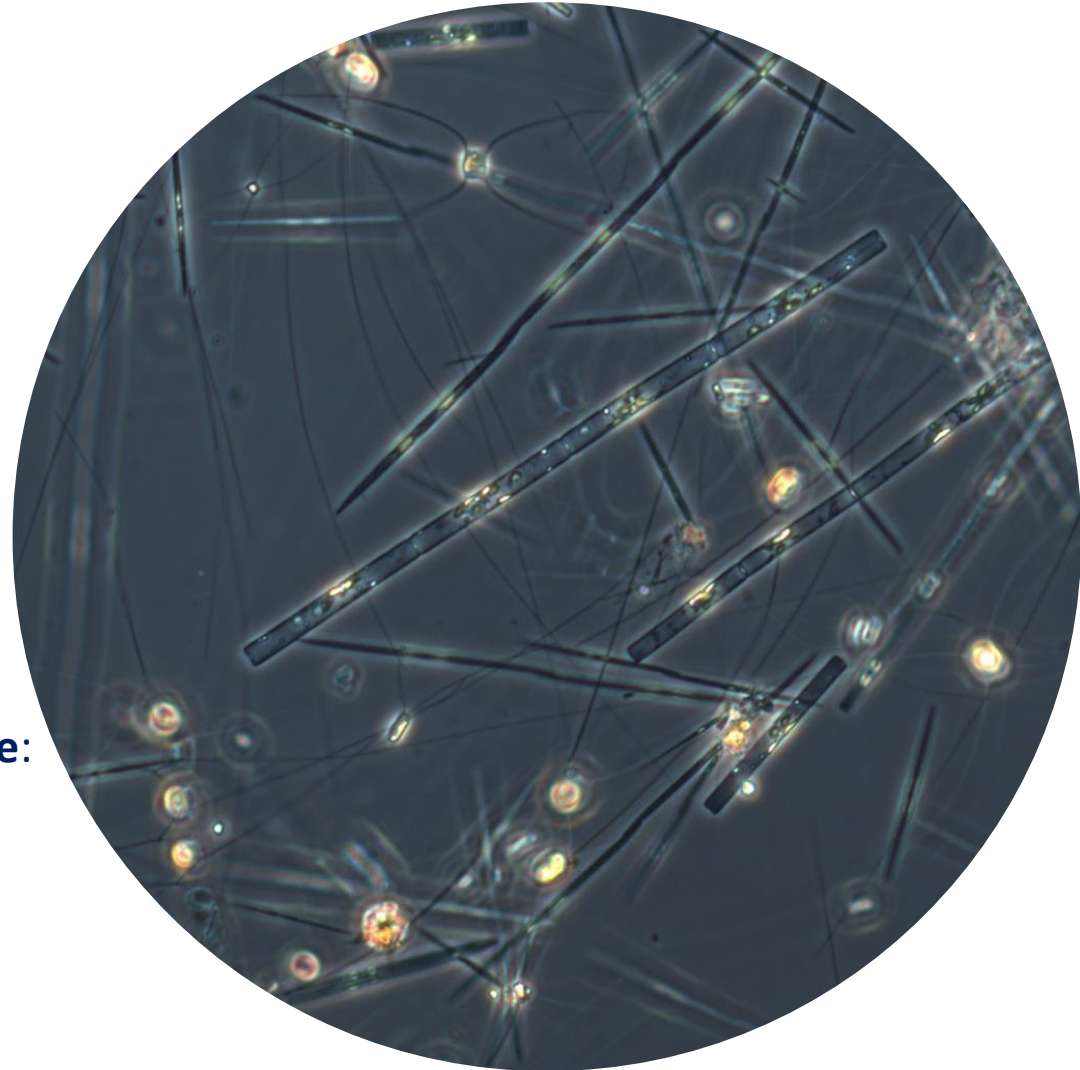
### Most abundant diatom species:

*Pseudo-nitzschia delicatissima* (10.1%)  
*Pseudo-nitzschia galaxiae* (6.5%)

### Most abundant species in the net sample:

*Pseudo-nitzschia delicatissima*  
*Pseudo-nitzschia galaxiae*  
*Leptocylindrus danicus*

Notes: preliminary quantitative analysis



Live sample