

MC 1103

13/05/2014

Phytoplankton abundance:

2.4×10^4 cells ml⁻¹

Phytoplankton groups percentage:

flagellates: 50.6%, diatoms: 46.6%,
dinoflagellates: 2.2%, coccolithophores: 0.6%

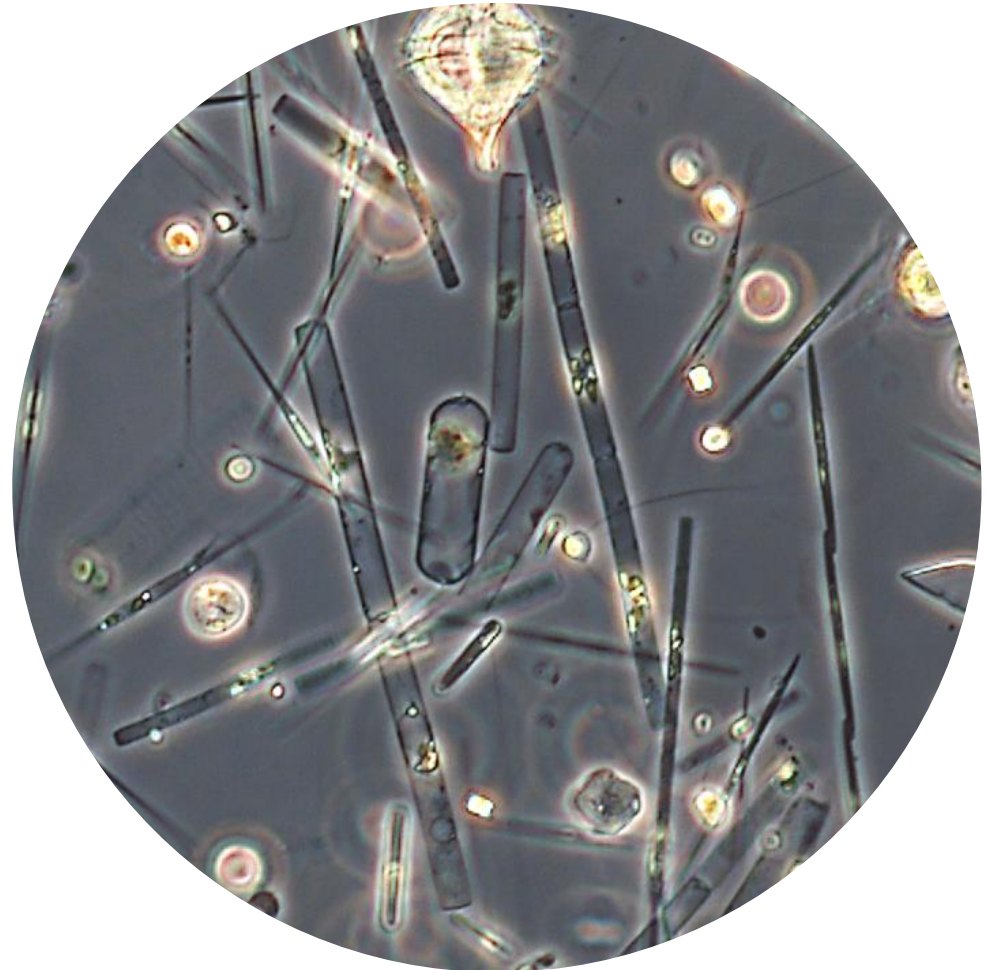
Most abundant diatom species:

Pseudo-nitzschia galaxiae (11.2%)
Skeletonema pseudocostatum (9.3%)
Pseudo-nitzschia delicatissima (6.5%)

Most abundant species in the net sample:

Pseudo-nitzschia galaxiae
Pseudo-nitzschia delicatissima
Leptocylindrus danicus

Notes: preliminary quantitative analysis



Live sample