

MC 1104

20/05/2014

Phytoplankton abundance:

2.3×10^4 cells ml⁻¹

Phytoplankton groups percentage:

flagellates: 66.2%, diatoms: 28.0%,
dinoflagellates: 4.6%, coccolithophores: 1.2%

Most abundant taxa:

Leptocylindrus danicus (7,9%)

Cryptophyceae spp. (8,95%)

Skeletonema pseudocostatum (3.3%)

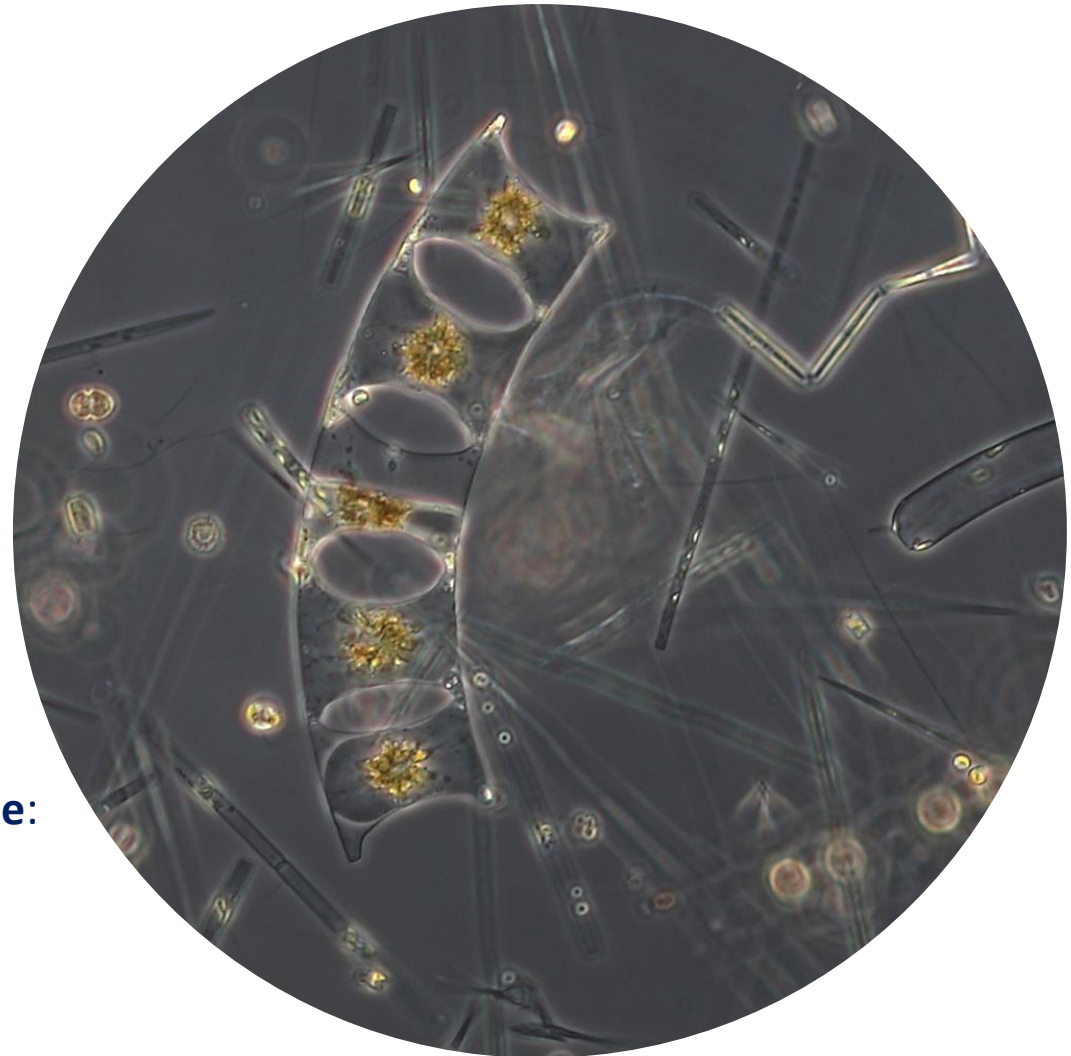
Most abundant species in the net sample:

Leptocylindrus danicus

Pseudo-nitzschia delicatissima

Pseudo-nitzschia galaxiae

Notes: preliminary quantitative analysis



Live sample