

MC 1107

11/06/2014

Phytoplankton abundance:

1.9×10^4 cells ml⁻¹

Phytoplankton groups percentage:

diatoms: 50.4%, flagellates: 47.7%,
dinoflagellates: 1.4%, coccolithophores: 0.5%

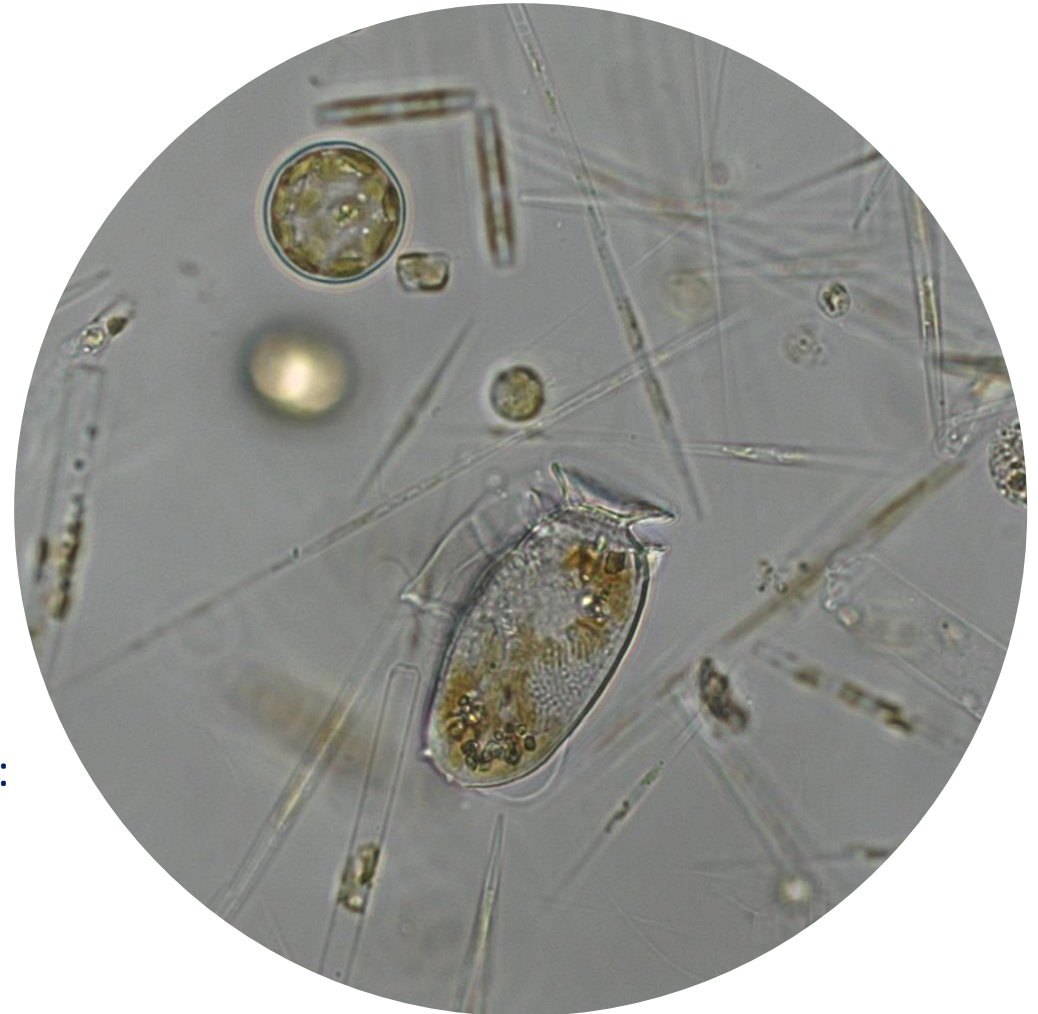
Most abundant diatom species:

Chaetoceros sp. single (25.5%)
Pseudo-nitzschia delicatissima (10%)
Chaetoceros tenuissimus (4.8%)

Most abundant species in the net sample:

Pseudo-nitzschia delicatissima
Chaetoceros sp. single
Thalassionema nitzschioides

Notes: preliminary quantitative analysis



Live sample