

MC 1157

16/06/2015

Phytoplankton abundance:

2.2×10^4 cells ml⁻¹

Phytoplankton groups percentage:

flagellates: 51.5%, diatoms: 47.3%,
dinoflagellates: 0.9%, coccolithophores: 0.3%

Most abundant taxa:

Chaetoceros spp. (17.4%)

Chaetoceros tenuissimus (14.1%)

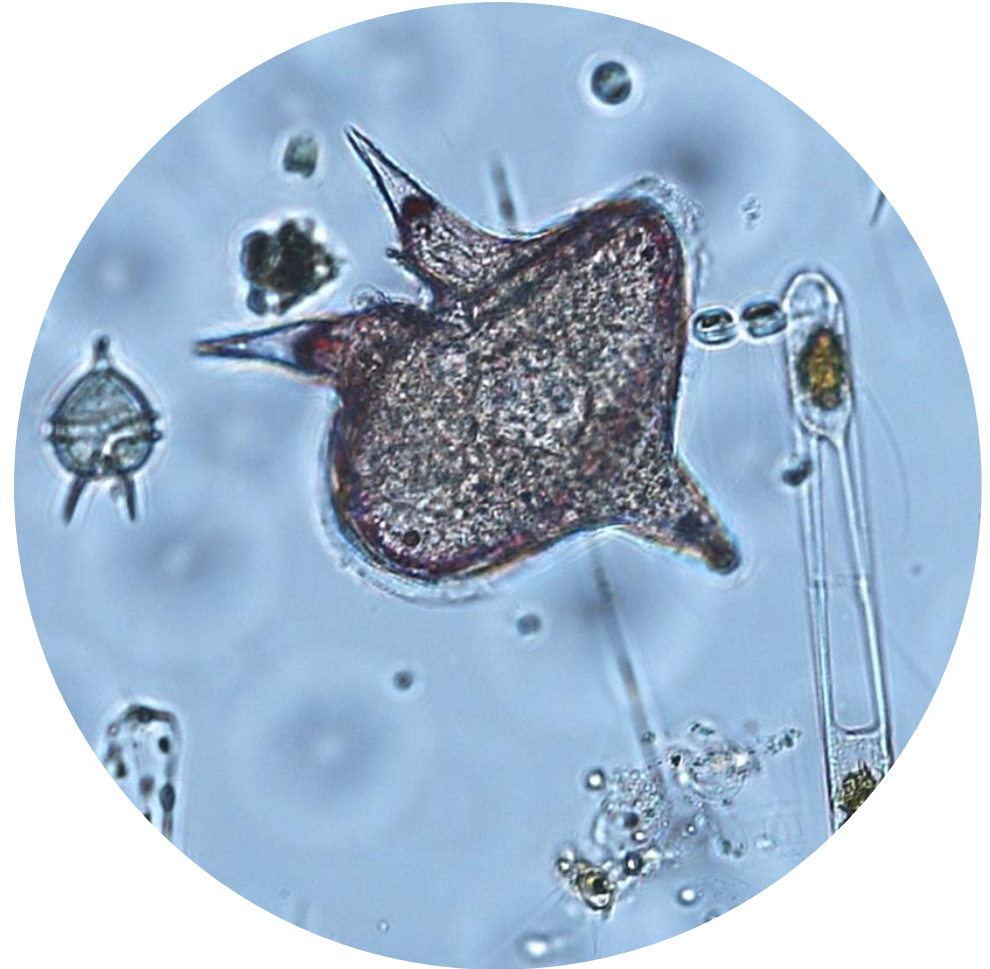
Most abundant species in the net sample:

Leptocylindrus convexus

Chaetoceros vixvisibilis

Protoperidinium spp.

NOTES: preliminary quantitative analysis



Live sample.

*Main species in the picture: Protoperidinium depressum
and Protoperidinium diabolus*