

Phytoplankton abundance:

1.8×10^3 cells ml⁻¹

Phytoplankton groups percentage:

flagellates: 72.5%, diatoms: 14.1%,
dinoflagellates: 1.1%, coccolithophores: 0.7%

Most abundant diatom species:

Pseudo-nitzschia delicatissima (4.7%)

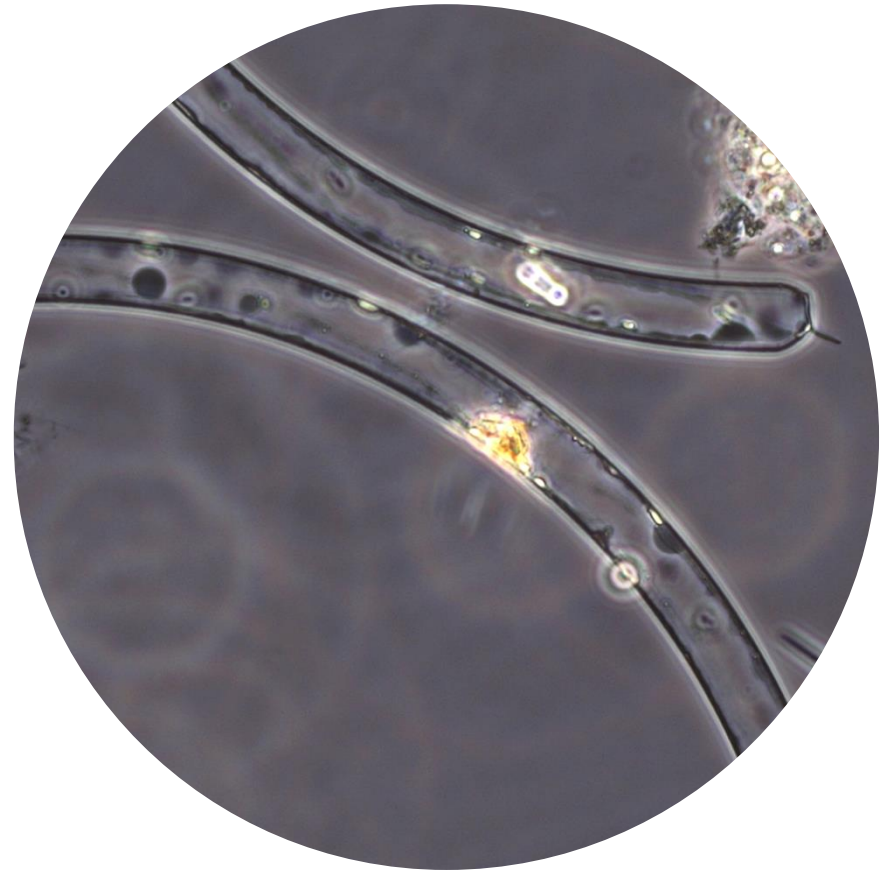
Leptocylindrus convexus (2.9%)

Most abundant species in the net sample:

Guinardia striata

Proboscia alata

NOTES: preliminary quantitative analysis



Live sample

Main species in the picture: *Guinardia striata*