

Phytoplankton abundance:

2.7×10^4 cells ml⁻¹

Phytoplankton groups percentage:

diatoms: 68.1%, flagellates: 30.5%,
dinoflagellates: 1.1%, coccolithophores: 0.3%

Most abundant diatom species:

Chaetoceros socialis (51.2%)

Cylindrotheca closterium (3.1%)

Most abundant species in the net sample:

Chaetoceros socialis

Chaetoceros tenuissimus

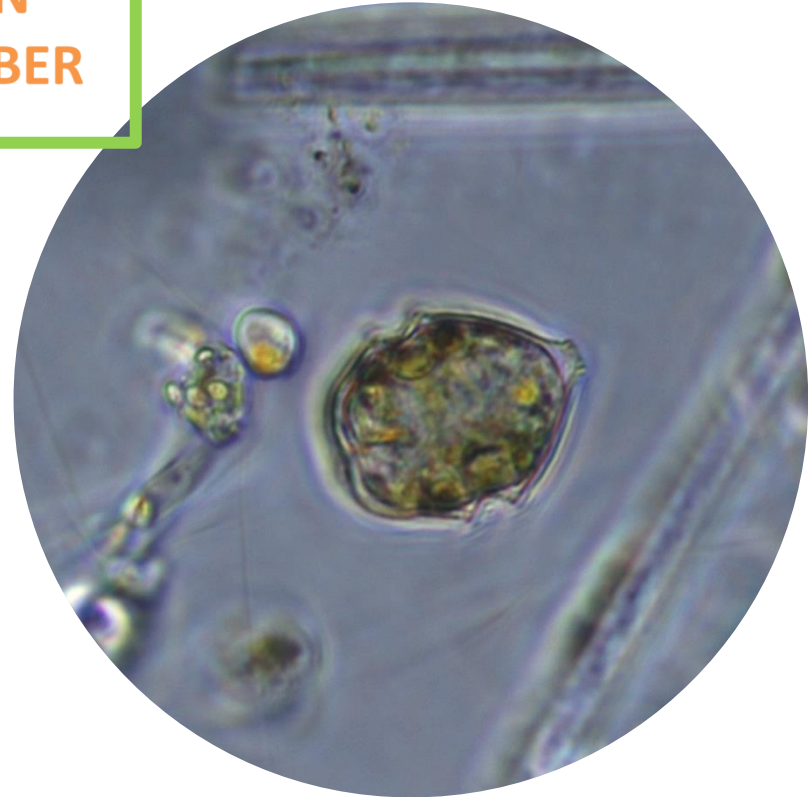
NOTES:

Summer Holidays

WE'LL BE

BACK IN

SEPTEMBER



Live sample

Main species in the picture: *Pentaparsodinium tyrrhenicum*