

Phytoplankton abundance:

7.8×10^3 cells ml⁻¹

Phytoplankton groups percentage:

flagellates: 49.5%, diatoms: 46.3%,
dinoflagellates: 2.5%, coccolithophores: 1.7%

Most abundant diatom species:

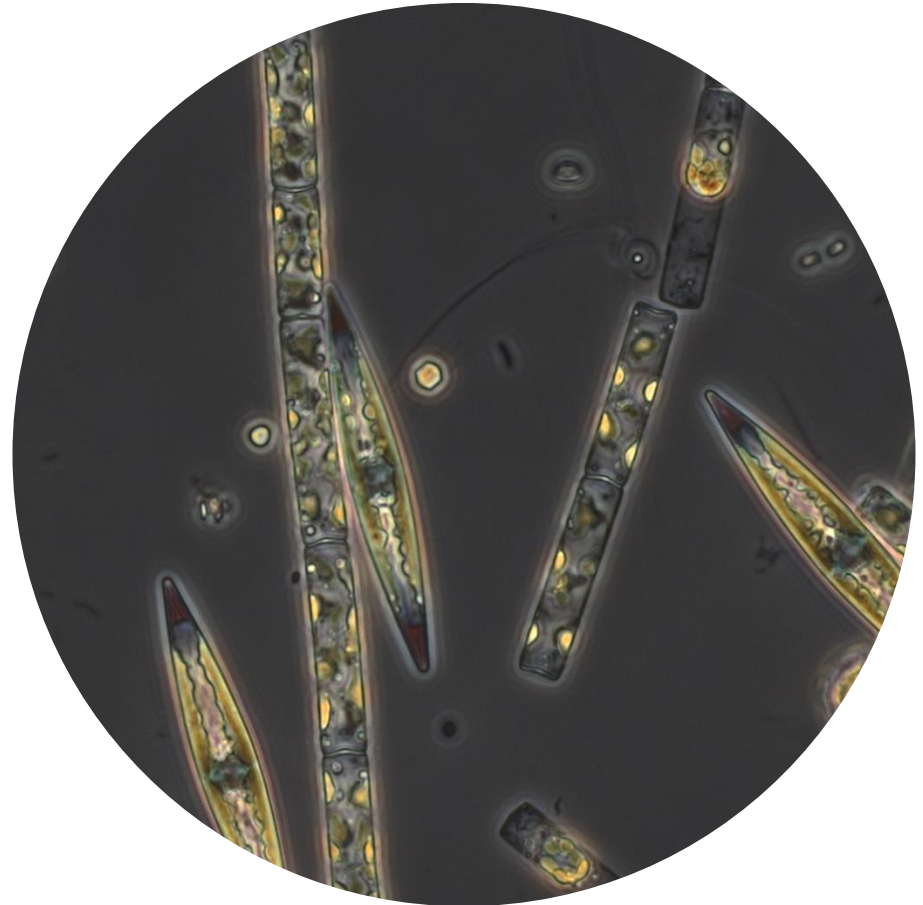
Chaetoceros tenuissimus (13.6%)

Chaetoceros socialis (6.0%)

Most abundant species in the net sample:

Leptocylindrus danicus

Chaetoceros tenuissimus



Live sample

Main species in the picture: *Leptocylindrus danicus* and *Haslea* sp.

NOTES: preliminary quantitative analysis