

**Phytoplankton abundance:**

$5.4 \times 10^2$  cells ml<sup>-1</sup>

**Phytoplankton groups percentage:**

flagellates: 68.6%, diatoms: 9.3%,  
coccolithophores: 11.3%, dinoflagellates: 8.1%

**Most abundant taxa:**

*Emiliana huxleyi* (10.1%)

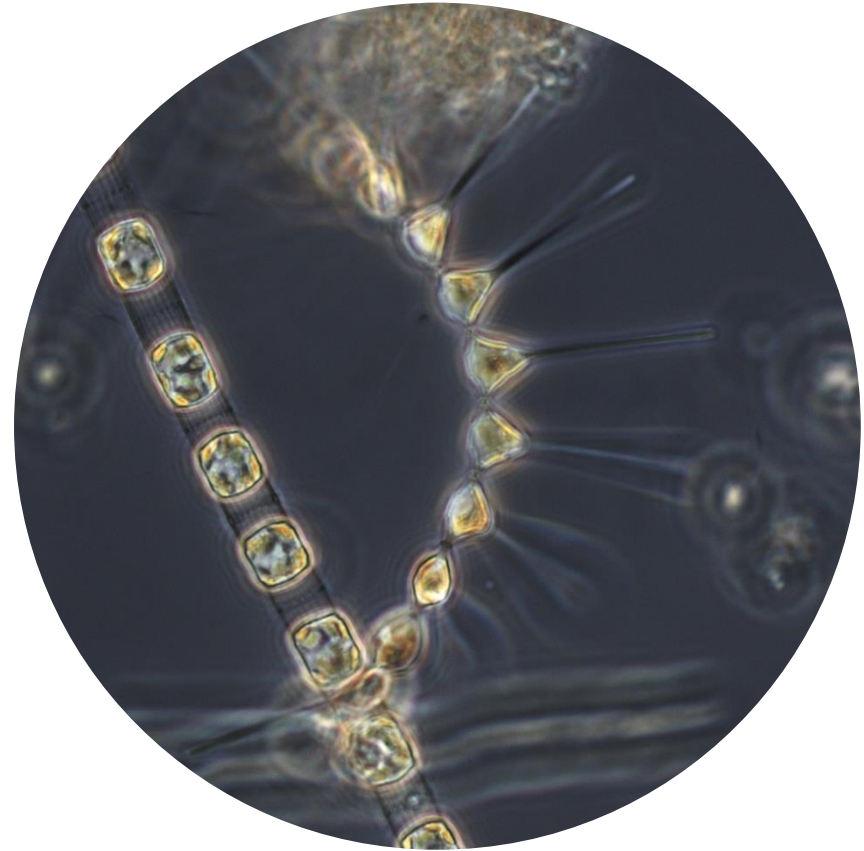
*Naked dinoflagellates* < 15 μm (6.6%)

**Most abundant species in the net sample:**

*Thalassiosira rotula*

*Asterionellopsis glacialis*

*Chaetoceros socialis*



**Live sample**

*Main species in the picture: Skeletonema tropicum and  
Asterionellopsis glacialis*

**NOTES: preliminary quantitative analysis**