

### Phytoplankton abundance:

$6.7 \times 10^2$  cells ml<sup>-1</sup>

### Phytoplankton groups percentage:

flagellates: 72.6%, diatoms: 19.2%,  
coccolithophores: 4.4%, dinoflagellates: 3.8%

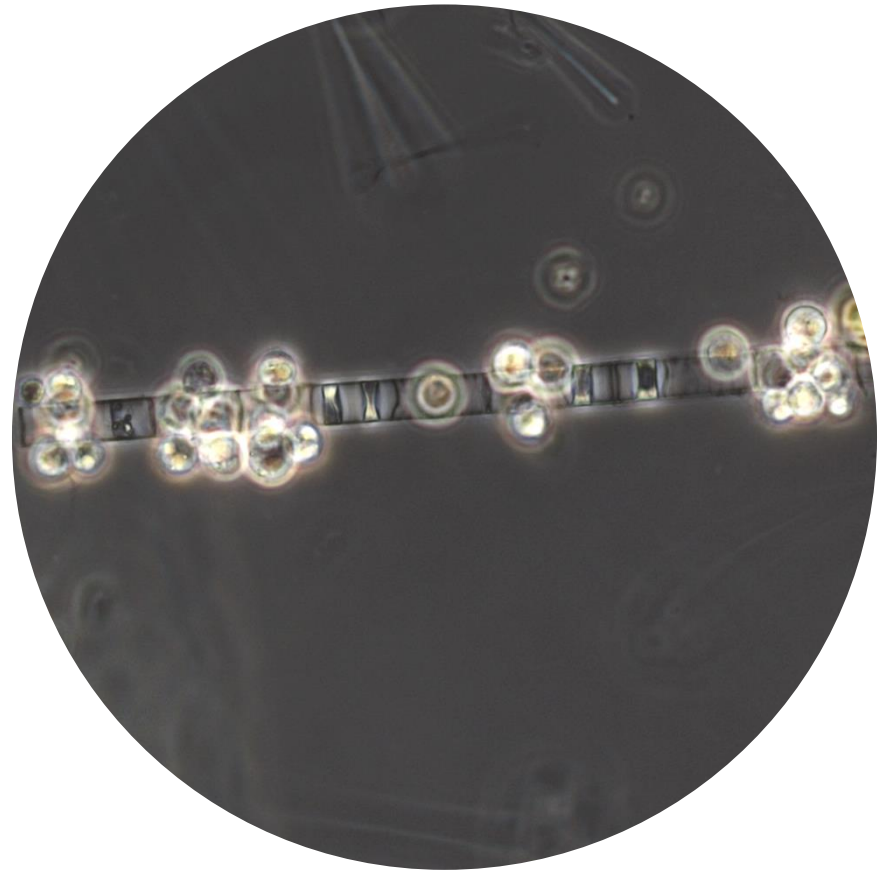
### Most abundant taxa:

*Chaetoceros curvisetus* (7.1%)  
*Asterionellopsis glacialis* (4.2%)

### Most abundant species in the net sample:

*Chaetoceros curvisetus*  
*Asterionellopsis glacialis*  
*Leptocylindrus mediterraneus*

### NOTES:



### Live sample

**Main species in the picture:** Symbiosis between the flagellate *Solenicola setigera* and *Leptocylindrus mediterraneus*.