

Phytoplankton abundance:

1.0×10^3 cells ml⁻¹

Phytoplankton groups percentage:

flagellates: 78.6%, diatoms: 12.5%,
coccolithophores: 6.3%, dinoflagellates: 2.6%

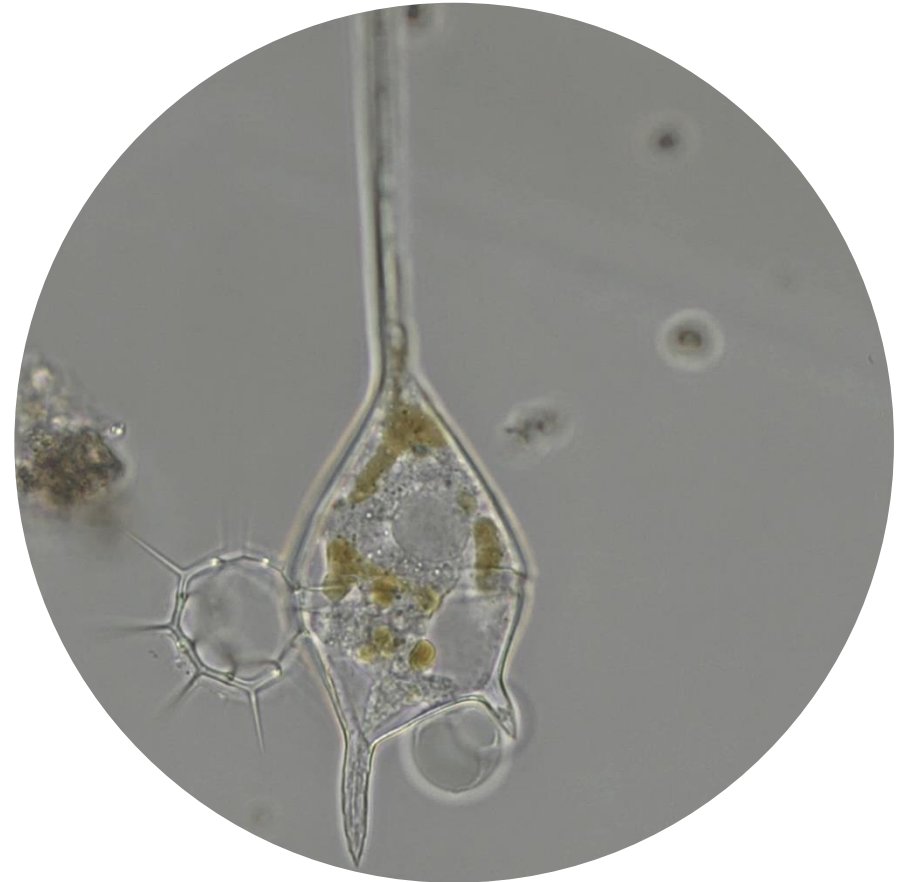
Most abundant taxa:

Emiliana huxleyi (5.2%)
Skeletonema menzeli (4.7%)

Most abundant species in the net sample:

Asterionellopsis glacialis

NOTES:



Live sample

Main species in the picture: *Tripes teres*.