

**Phytoplankton abundance:**

$1.9 \times 10^3$  cells ml<sup>-1</sup>

**Phytoplankton groups percentage:**

flagellates: 69.6%, diatoms: 24.1%,  
dinoflagellates: 4.3%, coccolithophores: 2.0%

**Most abundant taxa:**

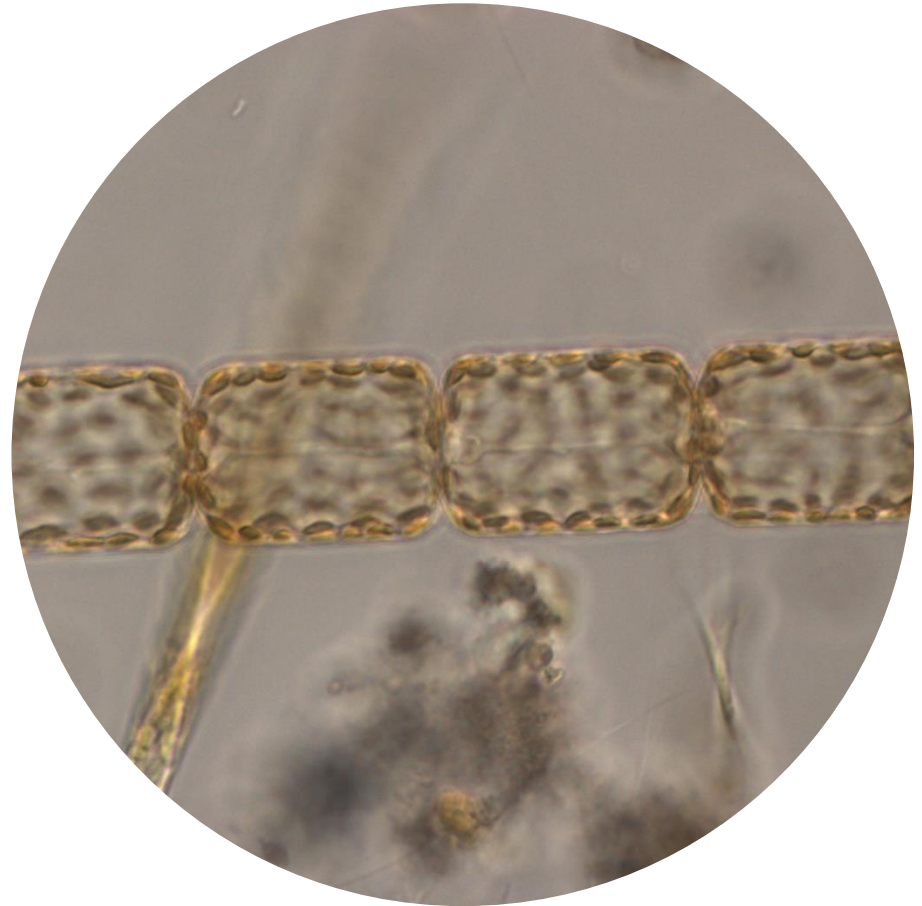
*Thalassiosira mediterranea* (6.0%)

*Chaetoceros diadema* (4.0%)

**Most abundant species in the net sample:**

*Lauderia annulata*

*Chaetoceros pseudocurvisetus*



**Live sample**

**Main species in the picture:** *Lauderia annulata*

**NOTES:** preliminary quantitative analysis.