

### Phytoplankton abundance:

$1.2 \times 10^4$  cells ml<sup>-1</sup>

### Phytoplankton groups percentage:

diatoms: 60.2%, flagellates: 36.0%,  
dinoflagellates: 3.1%, coccolithophores: 0.7%

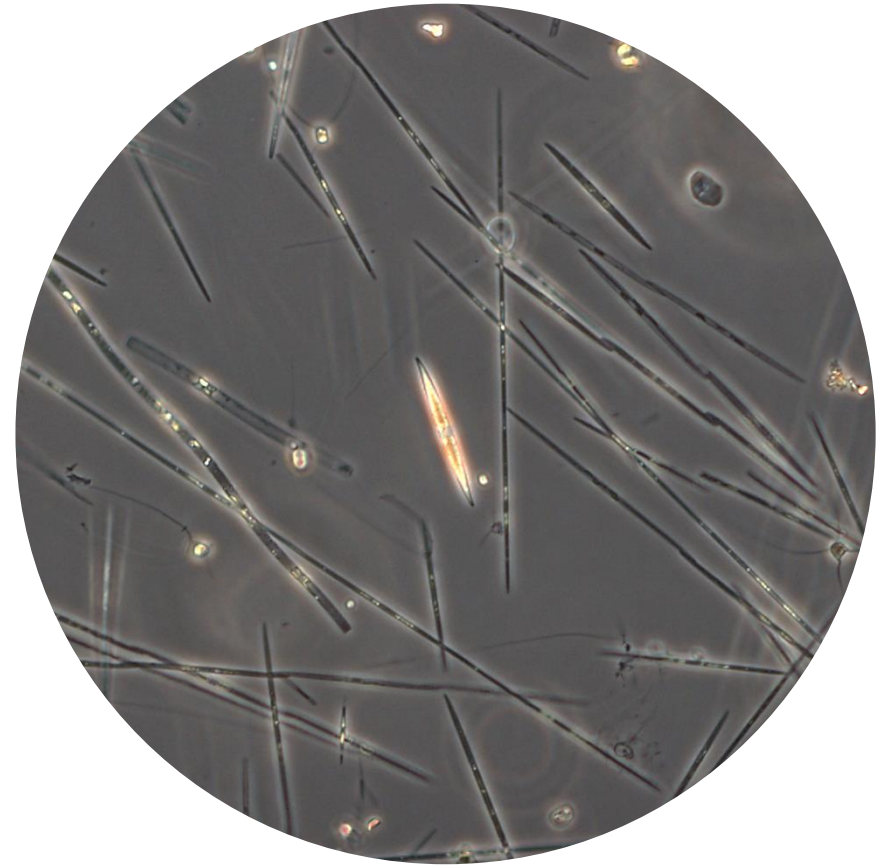
### Most abundant taxa:

*Pseudo-nitzschia pseudodelicatissima* (30.3%)  
*Pseudo-nitzschia delicatissima* (10.6%)

### Most abundant species in the net sample:

*Pseudo-nitzschia delicatissima*  
*Pseudo-nitzschia pseudodelicatissima*  
*Syracosphaera pulchra*

**NOTES: preliminary quantitative analysis**



### Live sample

Main species in the picture: *Pseudo-nitzschia pseudodelicatissima* and  
*Pseudo-nitzschia delicatissima*