

### Phytoplankton abundance:

$8.3 \times 10^3$  cells ml<sup>-1</sup>

### Phytoplankton groups percentage:

diatoms: 52.4%, flagellates: 44.0%,  
dinoflagellates: 1.9%, coccolithophores: 1.7%

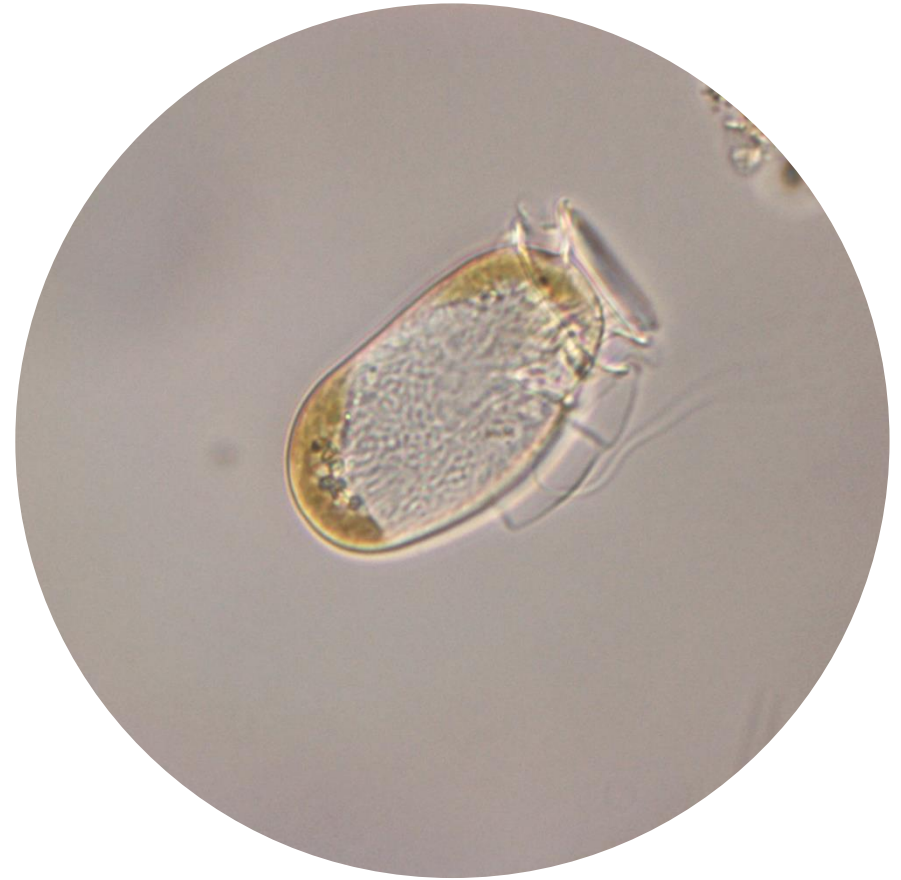
### Most abundant taxa:

*Pseudo-nitzschia pseudodelicatissima* (14.7%)  
*Chaetoceros* sp. single cell (14.0%)

### Most abundant species in the net sample:

*Pseudo-nitzschia delicatissima*  
*Pseudo-nitzschia pseudodelicatissima*  
*Dinophysis sacculus*

### NOTES:



**Live sample**

*Main species in the picture: Dinophysis sacculus*