

Phytoplankton abundance:

6.9×10^3 cells ml^{-1}

Phytoplankton groups percentage:

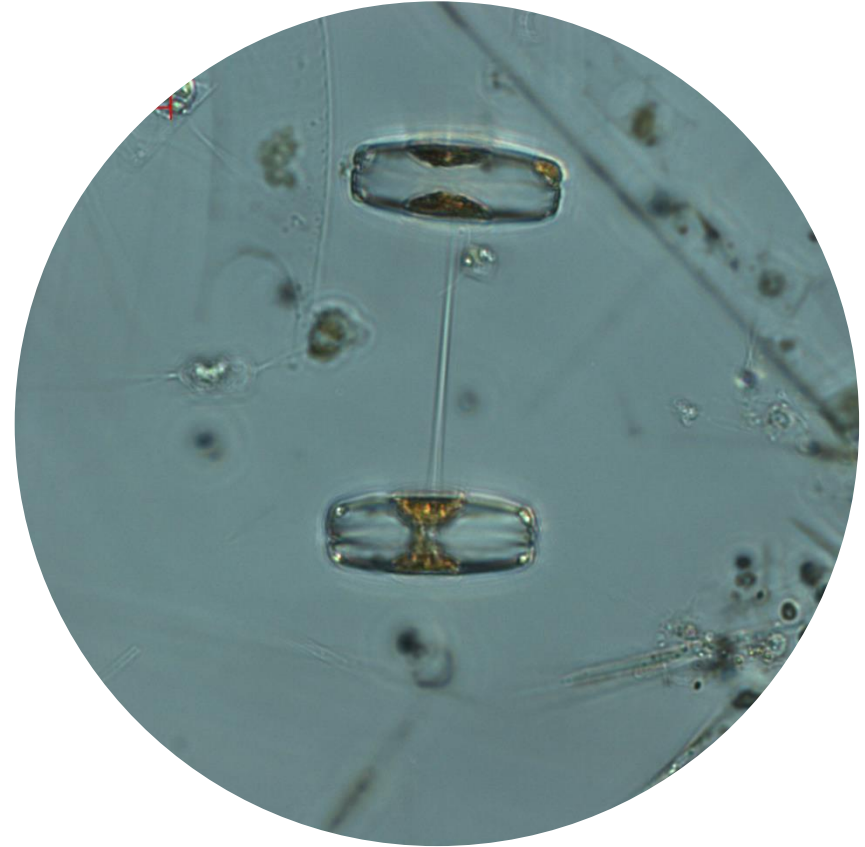
diatoms: 60.0%, flagellates: 36.2%,
dinoflagellates: 1.9%, coccolithophores: 1.9%

Most abundant taxa:

Pseudo-nitzschia pseudodelicatissima (13.2%)
Chaetoceros sp. single cell (7.9%)

Most abundant species in the net sample:

Pseudo-nitzschia pseudodelicatissima
Thalassiosira rotula
Chaetoceros contortus



Live sample

Main species in the picture: Thalassiosira rotula

NOTES: