

**Phytoplankton abundance:**

$1.2 \times 10^4$  cells ml<sup>-1</sup>

**Phytoplankton groups percentage:**

flagellates: 69.4%, diatoms: 25.9%,  
coccolithophores: 2.6%, dinoflagellates: 2.1%

**Most abundant taxa:**

*Chaetoceros thronsenii* (11.5%)

*Chaetoceros* spp. single (7.3%)

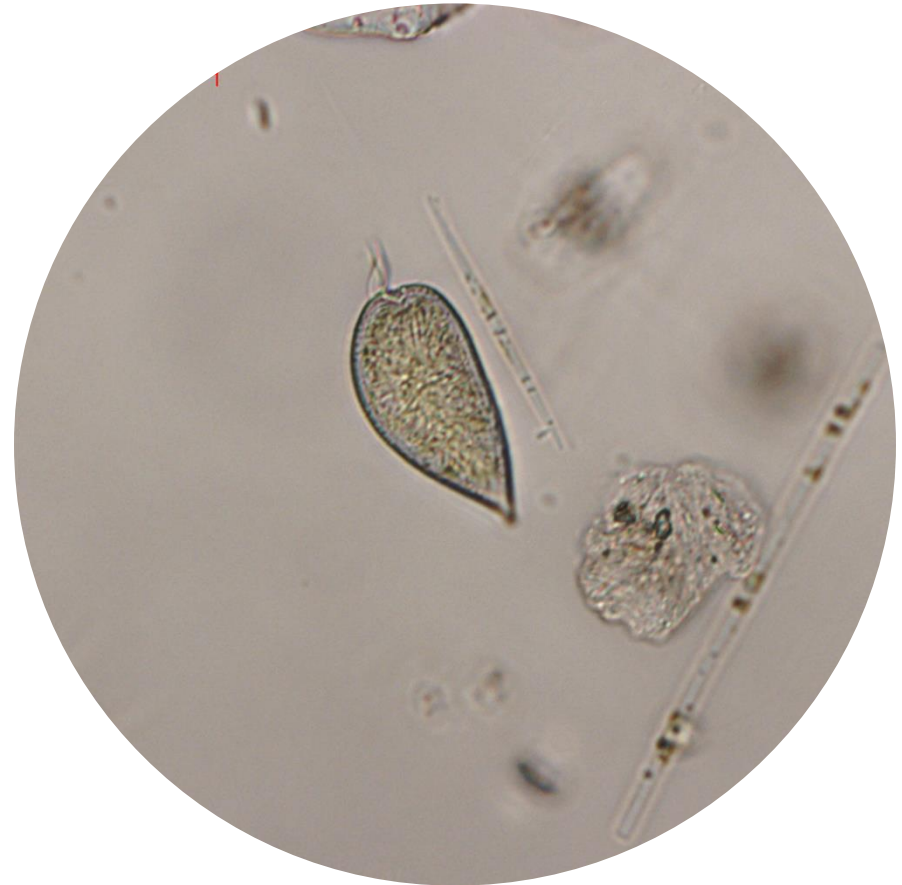
**Most abundant species in the net sample:**

*Pseudo-nitzschia galaxiae*

*Prorocentrum gracile*

*Protoperdinium diabolus*

**NOTES: preliminary quantitative analysis**



**Live sample**

*Main species in the picture: Prorocentrum gracile*