

### Phytoplankton abundance:

$1.2 \times 10^3$  cells ml<sup>-1</sup>

### Phytoplankton groups percentage:

flagellates: 57.5%, diatoms: 36.3%,  
coccolithophores: 4.8%, dinoflagellates: 1.4%

### Most abundant taxa:

*Chaetoceros socialis* (22.5%)

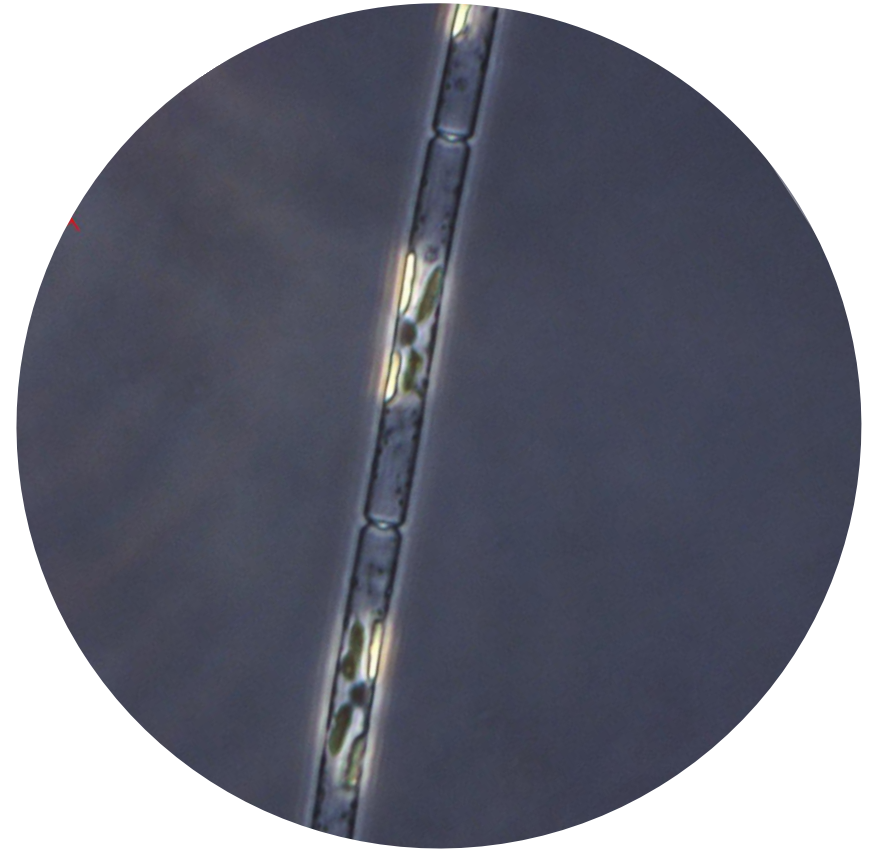
*Emiliana huxleyi* (4.5%)

### Most abundant species in the net sample:

*Leptocylindrus convexus*

*Chaetoceros socialis*

### NOTES:



### Live sample

Main species in the picture: *Leptocylindrus convexus*