

Phytoplankton abundance:

$9.8 \times 10^2 \text{ cells ml}^{-1}$

Phytoplankton groups percentage:

flagellates: 57.5%, diatoms: 31.7%,
coccolithophores: 4.8%, dinoflagellates: 2.9%

Most abundant taxa:

Chaetoceros socialis (20.3%)

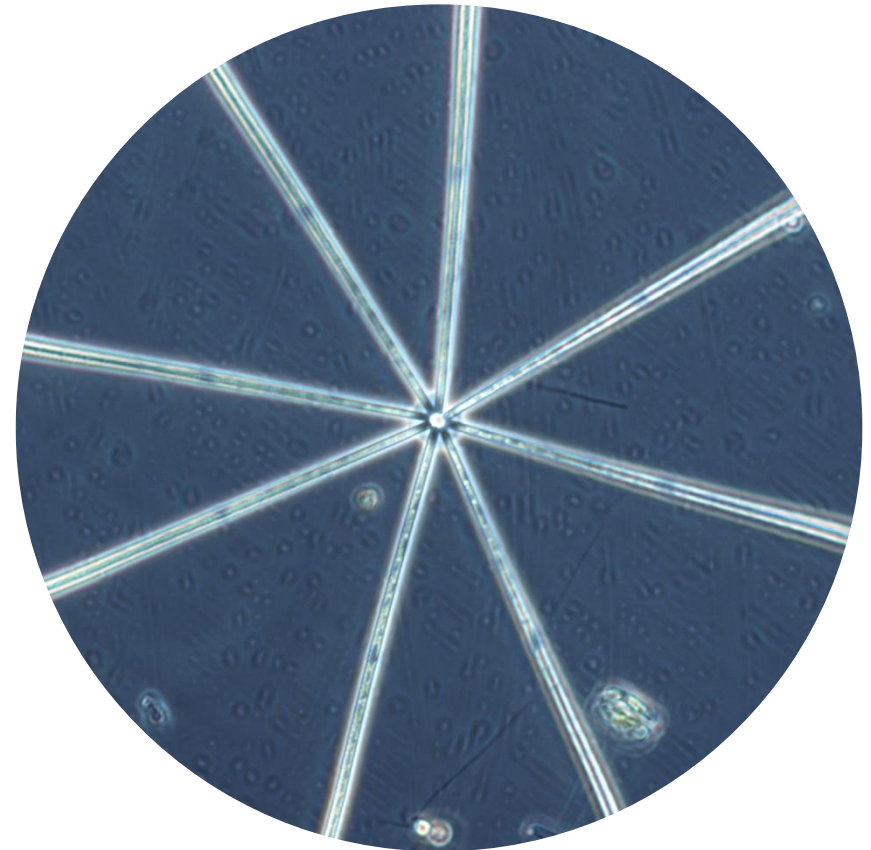
Emiliana huxleyi (2.8%)

Most abundant species in the net sample:

Chaetoceros socialis

Leptocylindrus danicus

NOTES:



Live sample

Main species in the picture: *Thalassionema bacillare*