

Phytoplankton abundance:

2.3×10^2 cells ml⁻¹

Phytoplankton groups percentage:

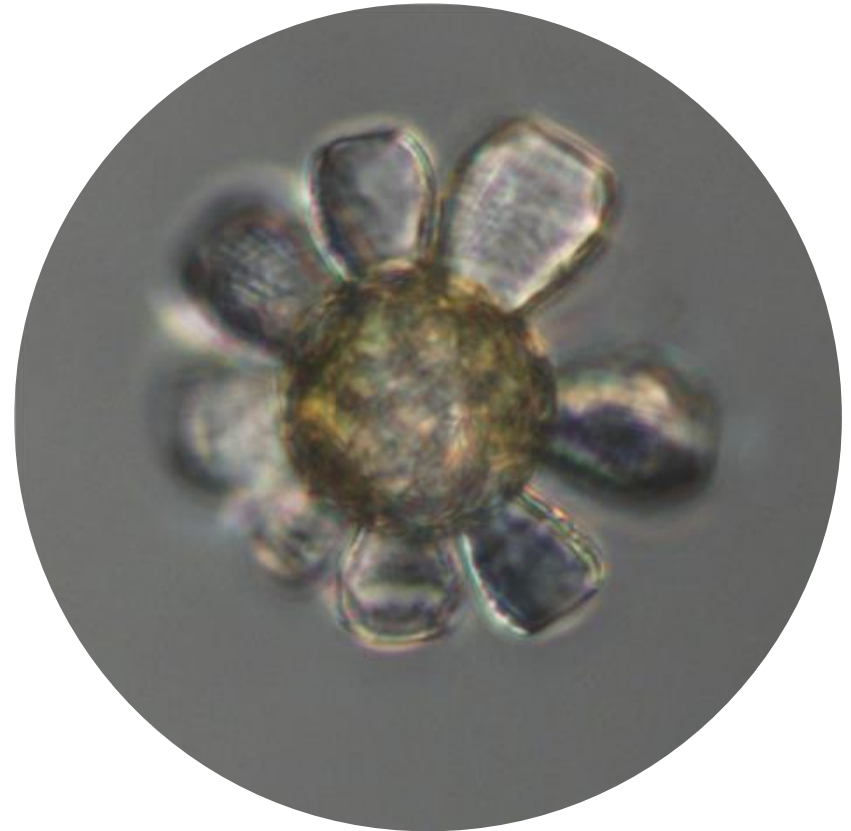
flagellates: 69.0%, diatoms: 16.9%,
coccolithophores: 10.7%, dinoflagellates: 3.4%

Most abundant taxa:

Emiliana huxleyi (9.8%)
Chaetoceros socialis (6.7%)

Most abundant species in the net sample:

Chaetoceros socialis



NOTES:

Live sample

Main species in the picture: Scyphosphaera apsteinii