

### Phytoplankton abundance:

$4.9 \times 10^2$  cells ml<sup>-1</sup>

### Phytoplankton groups percentage:

flagellates: 87.1%, diatoms: 2.9%,  
coccolithophores: 8.2%, dinoflagellates: 1.8%

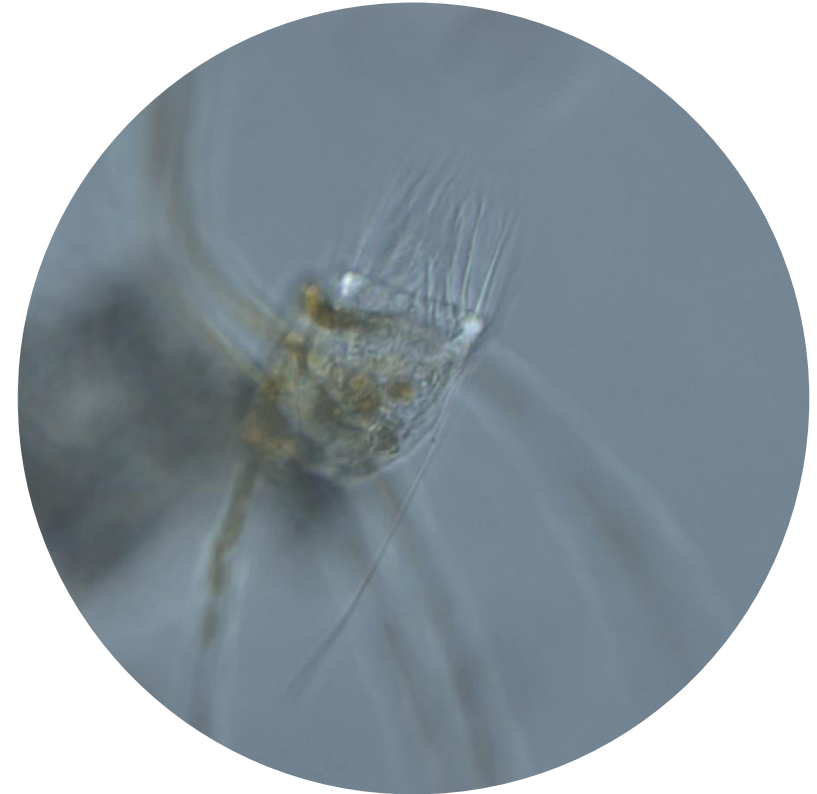
### Most abundant taxa:

*Emiliana huxleyi* (7.4%)

*Cylindrotheca closterium* (1.3%)

### Most abundant species in the net sample:

No dominant species



### Live sample

Main species in the picture: particular of *Chaetoceros daday*

### NOTES: