

Phytoplankton abundance:

2.4×10^3 cells ml⁻¹

Phytoplankton groups percentage:

flagellates: 67.1%, diatoms: 23.8%,
coccolithophores: 7.4%, dinoflagellates: 1.7%

Most abundant taxa:

Pseudo-nitzschia galaxiae (6.0%)

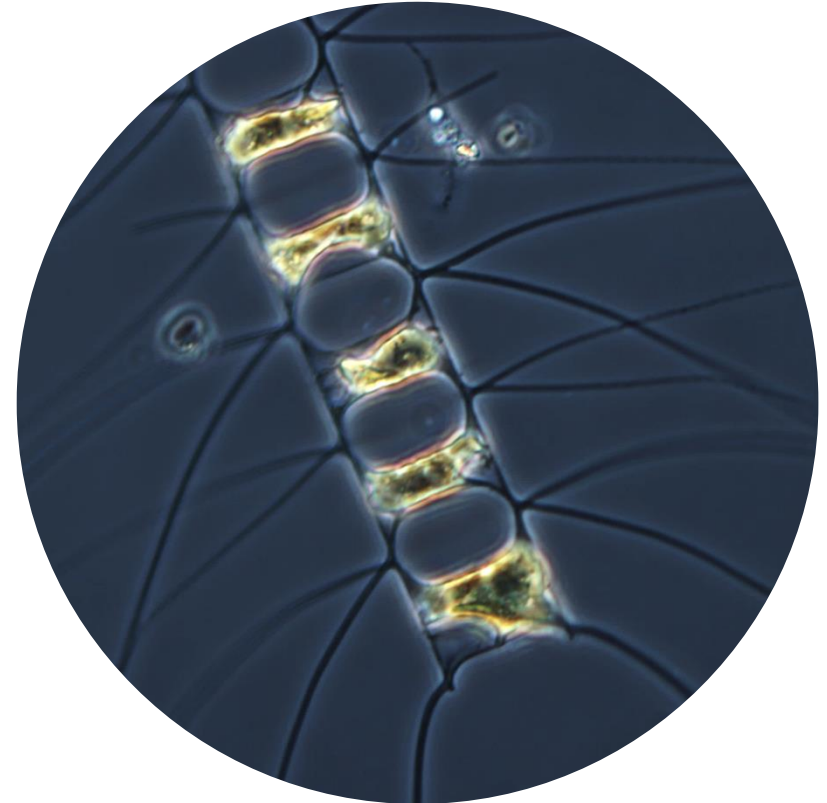
Emiliana huxleyi (7.0%)

Most abundant species in the net sample:

Chaetoceros pseudocurvisetus

Chaetoceros decipiens

NOTES:



Live sample

Main species in the picture: Chaetoceros decipiens