

Phytoplankton abundance:

3.6×10^2 cells ml⁻¹

Phytoplankton groups percentage:

flagellates: 82.2%, coccolithophores: 12.7%,
dinoflagellates: 4.0%, diatoms: 1.1%

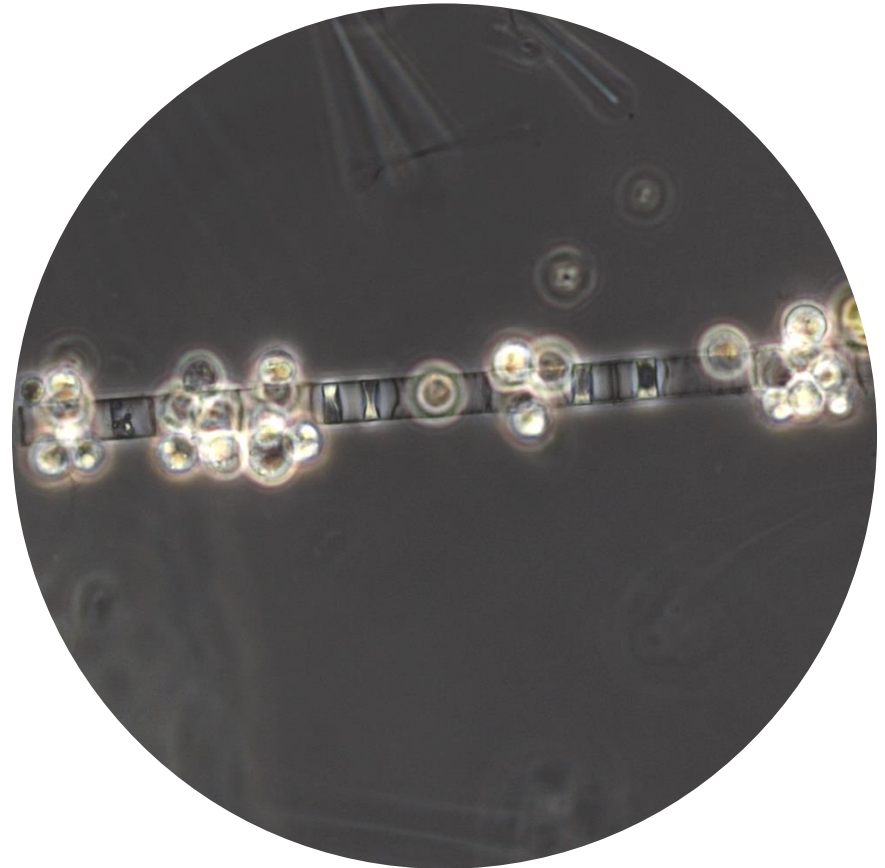
Most abundant taxa:

Emiliana huxleyi (11.6%)

Most abundant species in the net sample:

Proboscia alata

NOTES:



Live sample

Main species in the picture: Leptocylindrus mediterraneus