

Phytoplankton abundance:

6.3×10^2 cells ml⁻¹

Phytoplankton groups percentage:

flagellates: 81.9%, diatoms: 8.5%
coccolithophores: 5.0%, dinoflagellates: 4.6%,

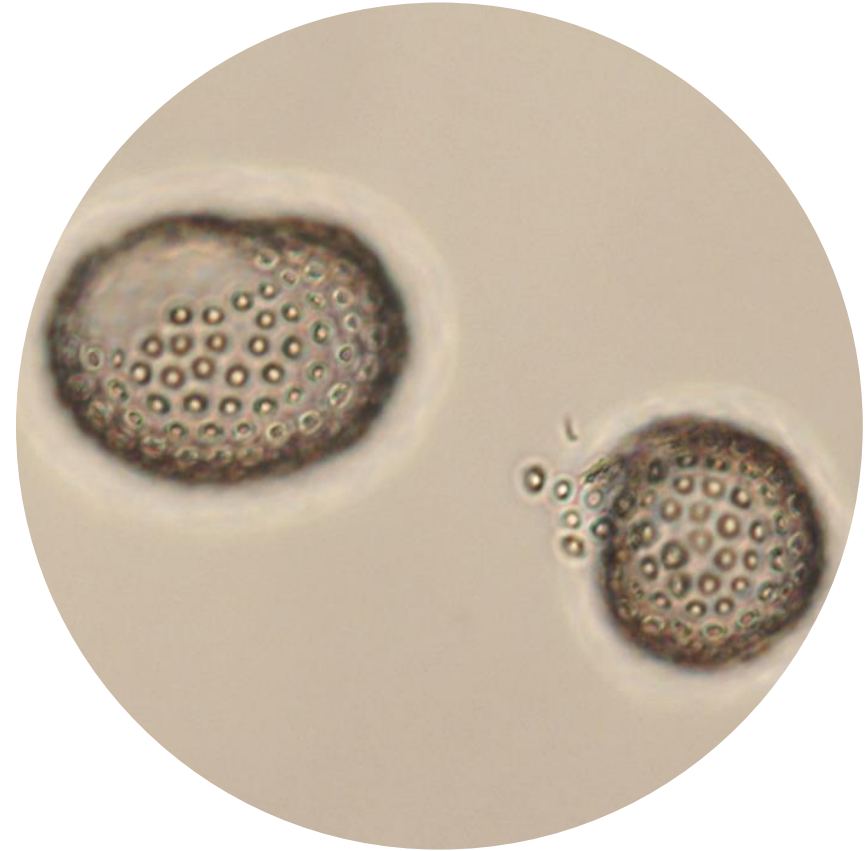
Most abundant taxa:

Emiliana huxleyi (4.1%)
Naked dinoflagellates < 15 μ m (3.7%)

Most abundant species in the net sample:

Chaetoceros decipiens
Proboscia alata

NOTES:



Live sample

Main species in the picture: Umbilicosphaera sibogae