

Phytoplankton abundance:

5.7×10^2 cells ml⁻¹

Phytoplankton groups percentage:

flagellates: 89.6%, coccolithophores: 2.6%,
dinoflagellates: 5.1%, diatoms: 2.7%

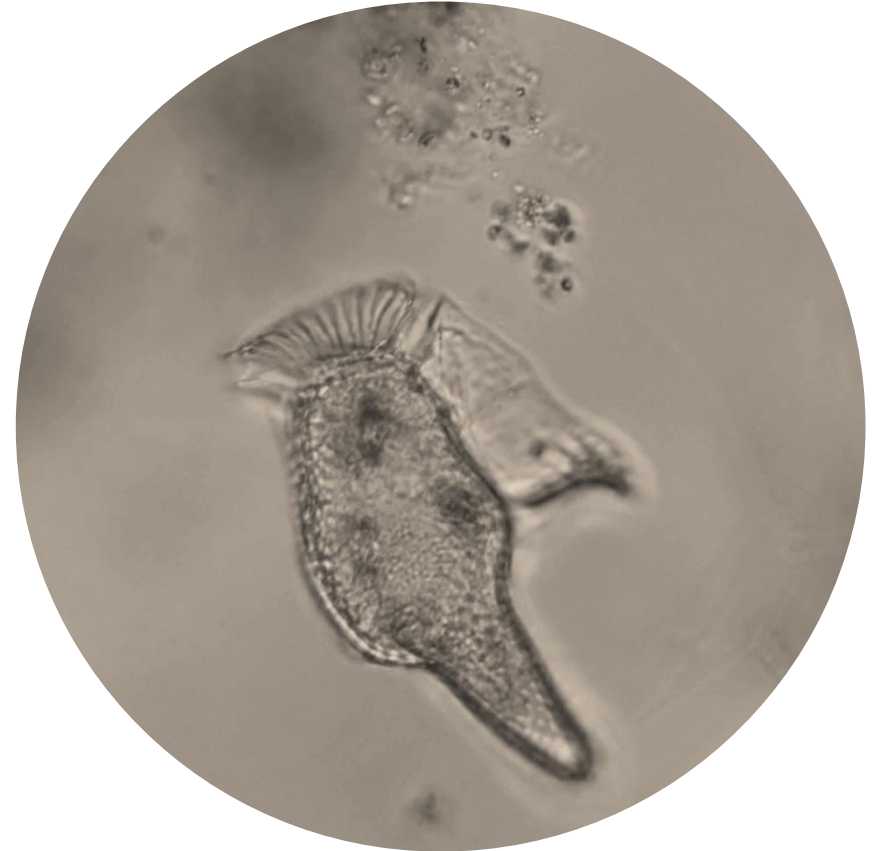
Most abundant taxa:

Naked dinoflagellates < 15 μm (3.1%)
Emiliana huxleyi (2.3%)

Most abundant species in the net sample:

No dominant species in the net

NOTES:



Live sample

Main species in the picture: Dinophysis caudata