

Phytoplankton abundance:

9.1×10^3 cells ml⁻¹

Phytoplankton groups percentage:

flagellates: 79.2%, diatoms: 17.4%,
dinoflagellates: 2.4%, coccolithophores: 0.5%

Most abundant taxa:

Leptocylindrus danicus (2.6%)

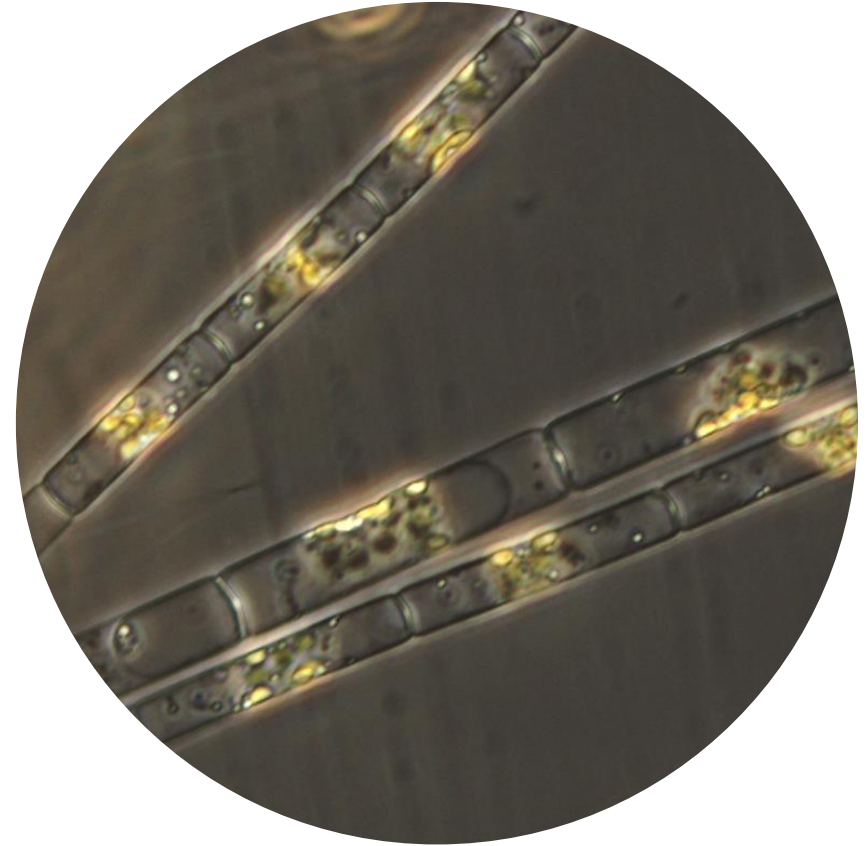
Chaetoceros tenuissimus (4.3%)

Most abundant species in the net sample:

Chaetoceros sp. A

Chaetoceros curvisetus

NOTES:



Live sample

Main species in the picture: Leptocylindrus danicus