

Phytoplankton abundance:

8.4×10^3 cells ml⁻¹

Phytoplankton groups percentage:

diatoms: 78.9%, flagellates: 18.6%,
coccolithophores: 2.1%, dinoflagellates: 0.4%

Most abundant taxa:

Chaetoceros tenuissimus (25.8%)

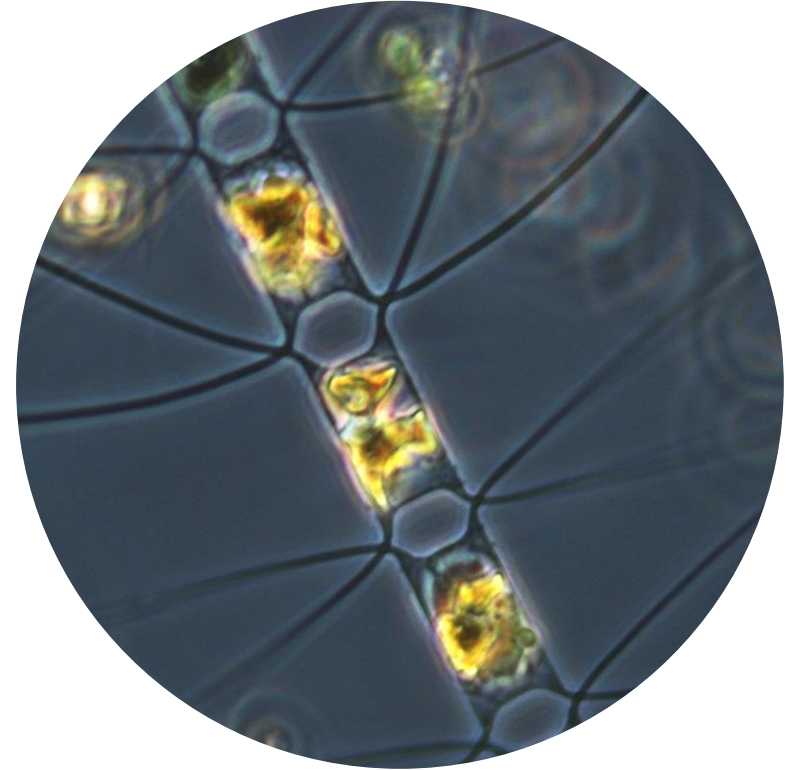
Chaetoceros spp. (18.3%)

Most abundant species in the net sample:

Chaetoceros cf. *lorenzianus*

Pseudo-nitzschia delicatissima

NOTES:



Live sample

Main species in the picture: Chaetoceros cf. *lorenzianus*