

Phytoplankton abundance:

3.4×10^3 cells ml⁻¹

Phytoplankton groups percentage:

flagellates: 54.6%, diatoms: 40.9%,
coccolithophores: 2.5%, dinoflagellates: 2.0%

Most abundant taxa:

Thalassiosira spp. (25.8%)

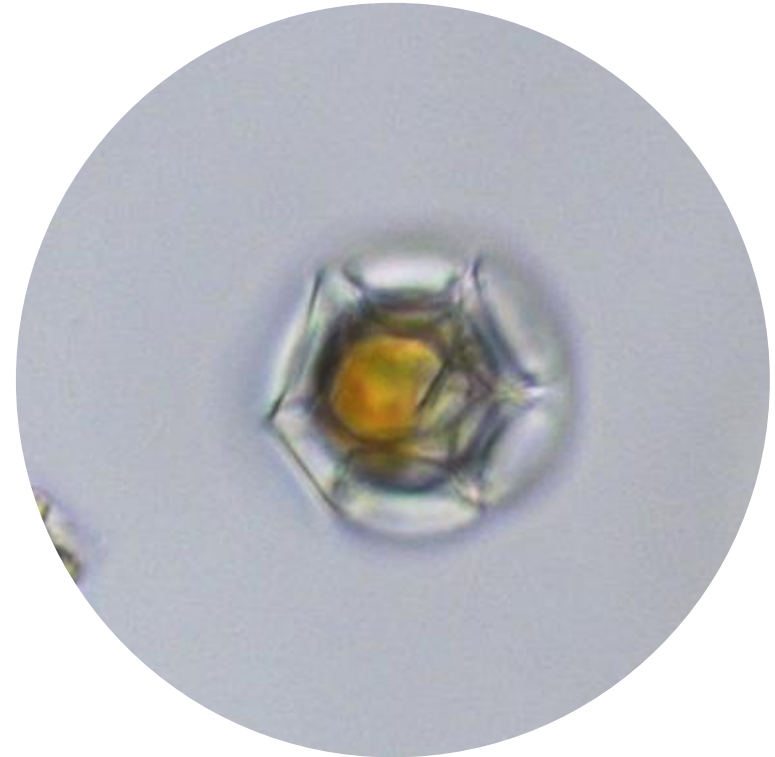
Chaetoceros tenuissimus (5.5%)

Most abundant species in the net sample:

Scrippsiella acuminata

Protoperidinium diabolus

NOTES:



Live sample

Main species in the picture: Pontosphaera syracusana