

### Phytoplankton abundance:

$5.8 \times 10^2$  cells ml<sup>-1</sup>

### Long-term average (May, 1984-2018):

$2.4 \times 10^3 \pm 1.4 \times 10^3$  cells ml<sup>-1</sup>

### Phytoplankton groups percentage:

flagellates: 91.0%, diatoms: 3.3%,  
dinoflagellates: 3.3%, coccolithophores: 2.4%

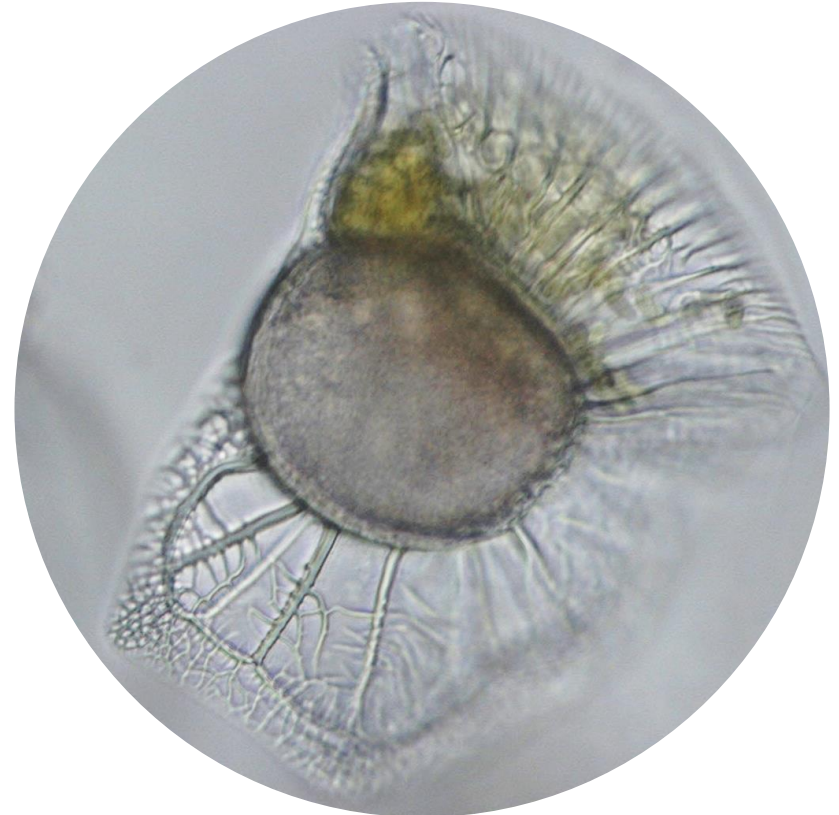
### Most abundant taxa:

Naked dinoflagellates < 15  $\mu$ m (2.3%)  
Undetermined *Cryptophyceae* < 10  $\mu$ m (2.3%)

### Most abundant species in the net sample:

*Protoperidinium diabolus*  
*Prorocentrum gracile*

**NOTES:** high species diversity of dinoflagellates in the net sample



**Live sample**

*Main species in the picture: Ornithocercus quadratus*