

### Phytoplankton abundance:

$2.9 \times 10^4$  cells ml<sup>-1</sup>

### Long-term average (May, 1984-2018):

$2.0 \times 10^3 \pm 0.9 \times 10^3$  cells ml<sup>-1</sup>

### Phytoplankton groups percentage:

diatoms: 64.5%, flagellates: 34.0%,

dinoflagellates: 0.9%, coccolithophores: 0.6%

### Most abundant taxa:

*Pseudo-nitzschia galaxiae* (20.0%)

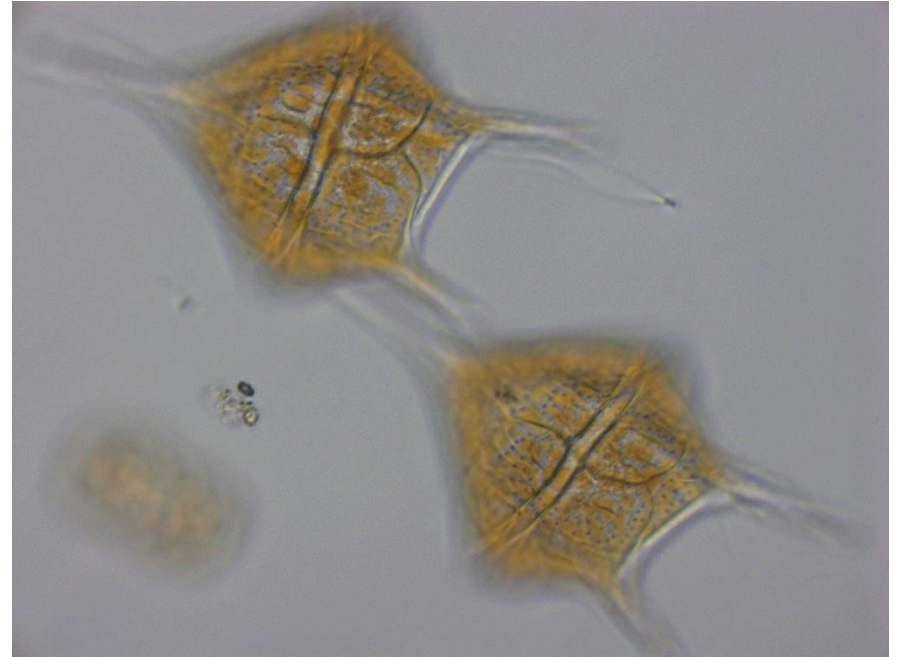
*Chaetoceros* spp. (16.0%)

### Most abundant species in the net sample:

*Cyclotella gracilis*

Naked dinoflagellates <15 μm

### NOTES:



### Live sample

Main species in the picture: *Tripos pentagonum*