

MC 1099

16/04/2014

Phytoplankton abundance:

1.7×10^4 cells ml⁻¹

Phytoplankton groups percentage:

diatoms: 56%, flagellates: 39.7%,
dinoflagellates: 2.7%, coccolithophores: 1.6%

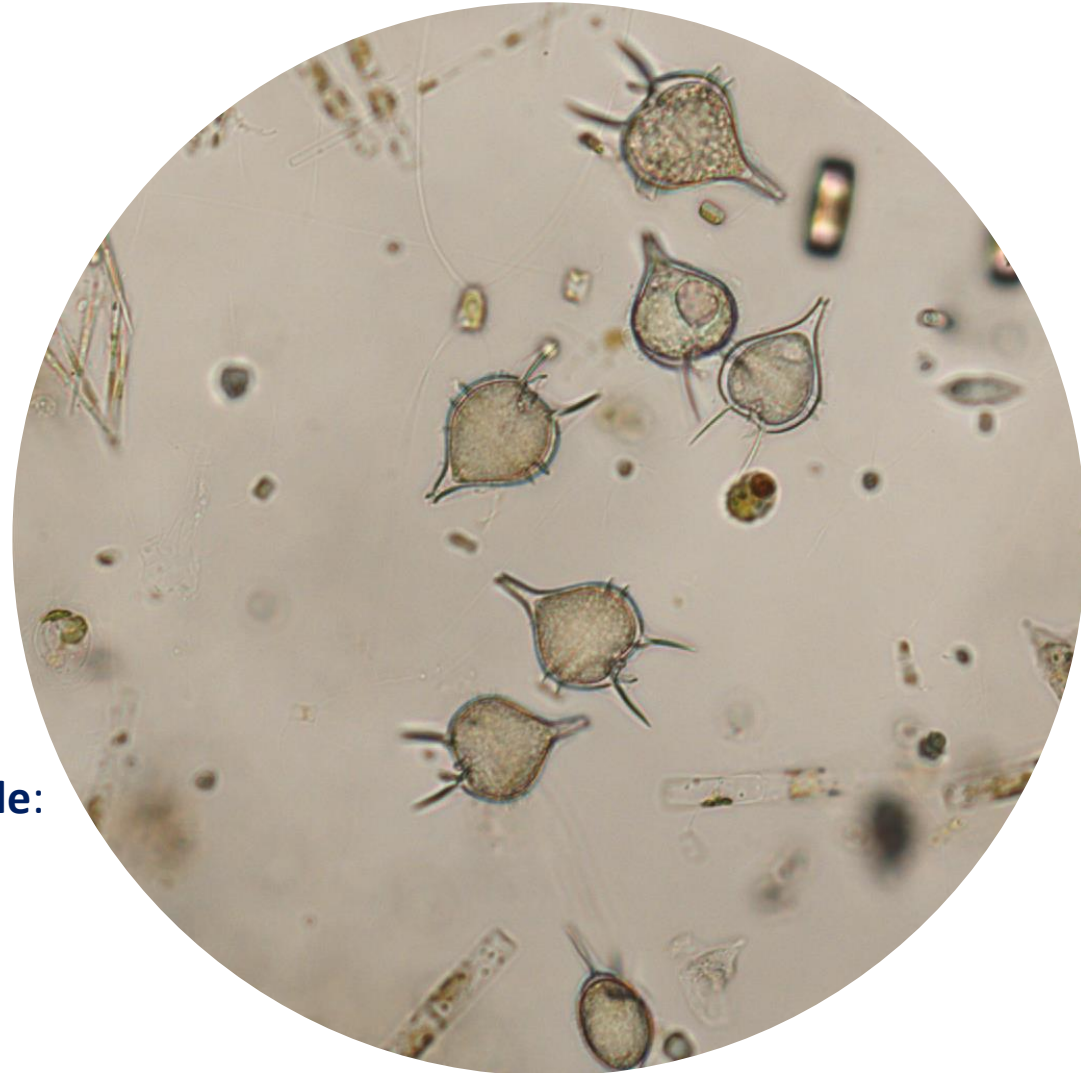
Most abundant diatom species:

Bacteriastrum parallelum (11%)
Chaetoceros socialis (8.4%)
Chaetoceros tenuissimus (5.1%)

Most abundant species in the net sample:

Protoperidinium diabolus
Leptocylindrus danicus
Syracosphaera pulchra

Notes: preliminary quantitative analysis



Live sample